

## Cam lab manual

 FRANCIS XAVIER ENGINEERING COLLEGE  
TIRUNELVELI - 627003.

DEPARTMENT OF MECHANICAL ENGINEERING

**CAD CAM**  
Solutions for Engineering World GATEWAY

ME - 6611, CAD / CAM LABORATORY MANUAL



Name	_____
Reg No	_____
Branch	MECHANICAL ENGINEERING
Semester	VI
Subject	CAD / CAM LABORATORY

1

**File Name:** Cam lab manual.pdf

**Size:** 4772 KB

**Type:** PDF, ePub, eBook

**Category:** Book

**Uploaded:** 22 May 2019, 23:51 PM

**Rating:** 4.6/5 from 577 votes.

# Download Now!

Please check the box below to proceed.



I'm not a robot



reCAPTCHA  
Privacy - Terms

## Book Descriptions:

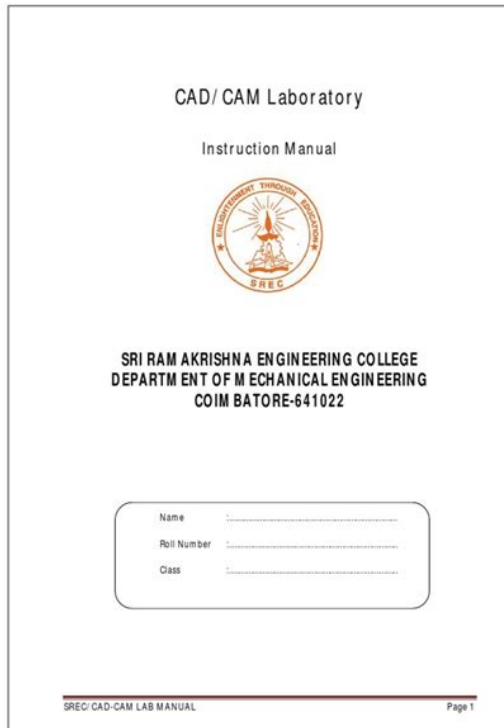
# Cam lab manual



Our payment security system encrypts your information during transmission. We don't share your credit card details with thirdparty sellers, and we don't sell your information to others. Please try again. Please try again. These models typically appear on a computer monitor as a threedimensional representation of a part or a system of parts, which can be readily altered by changing relevant parameters. CAD systems enable designers to view objects under a wide variety of representations and to test these objects by simulating realworld conditions. Computeraided manufacturing CAM uses geometrical design data to control automated machinery. CAM systems are associated with computer numerical control CNC or direct numerical control DNC systems. These systems differ from older forms of numerical control NC in that geometrical data are encoded mechanically. Since both CAD and CAM use computerbased methods for encoding geometrical data, it is possible for the processes of design and manufacture to be highly integrated. Then you can start reading Kindle books on your smartphone, tablet, or computer no Kindle device required. In order to navigate out of this carousel please use your heading shortcut key to navigate to the next or previous heading. Register a free business account If you are a seller for this product, would you like to suggest updates through seller support To calculate the overall star rating and percentage breakdown by star, we don't use a simple average. Instead, our system considers things like how recent a review is and if the reviewer bought the item on Amazon. It also analyzes reviews to verify trustworthiness. Do you want to read the rest of this technical report. Request fulltext Advertisement Citations 0 References 0 ResearchGate has not been able to resolve any citations for this publication. ResearchGate has not been able to resolve any references for this publication. <http://www.emilioborsani.it/fckloaded/digitech-fs300-manual.xml>

- **cam lab manual, cam lab manual for mechanical engineering pdf, cam lab manual pdf, cam laboratory manual pdf, cad cam lab manual, cad cam lab manual anna**

**university, cad cam lab manual for diploma mechanical engineering, cad cam lab manual pdf, cad cam lab manual doc, cad cam lab manual jntu, cam lab manual, cam lab manual pdf, cam lab manual pdf, cam lab manual free, cam lab manual online, cam lab manual downloads, cam lab manual template, cam lab manual software, cam lab manual instructions, cam lab manual 2017.**



Um modelo de resina epoxica contendo 3 implantes dentais na regio dos dentes 22 1, 24 2 e 26 3 foi utilizado como modelo mestre. Para a tecnica convencional G1, modelos de gesso n10 foram obtidos a partir da tecnica da moldeira aberta. A confeccao dos modelos n10 foi realizada com base nas imagens virtuais, a partir da prototipagem rapida. Posteriormente, o modelo mestre, os modelos de gesso e modelos prototipados foram digitalizados com um scanner laboratorial. A discrepancia media, maxima discrepancia positiva e maxima discrepancia negativa entre cada modelo e o modelo mestre foram determinadas, assim como a discrepancia encontrada em pontos localizados de interesse cuspide vestibular, cuspide lingual e fossa. Para a analise estatistica dos dados, utilize teste T de Student com nivel de significancia p 0.05. Resultados Nao houve diferenca estatisticamente significativa entre a discrepancia media dos modelos convencionais e prototipados. Entretanto, em pontos de interesse a discrepancia foi maior para os modelos prototipados. Palavras-chave Tecnicas de Moldagem Odontologica. Proteses e Implantes. Implantes Dentarios. An interactive graphics system was specified and developed to integrate design, drafting, testing, analysis, and manufacturing operations to achieve efficient and effective Laboratorywide services. The data base allows for levels of attributes that can be attached or deleted and interrogated. This graphics system is described with emphasis on its capability and efficiencies and the effect of the associative data base on the design/build/test cycle. The capability of attaching attributes is explored as the means of communicating the design and manufacturing data base to the management data base. The graphic system is shown to be cost effective for the big as well as small user. <http://www.imagemarte.com.br/arquivos/digitech-genesis-1-manual.xml>



FRANCIS XAVIER ENGINEERING  
COLLEGE  
TIRUNELVELI - 627003.

DEPARTMENT OF MECHANICAL ENGINEERING

**CAD CAM**  
Solutions for Engineering World **GATEWAY**

ME - 6611, CAD / CAM LABORATORY- MANUAL



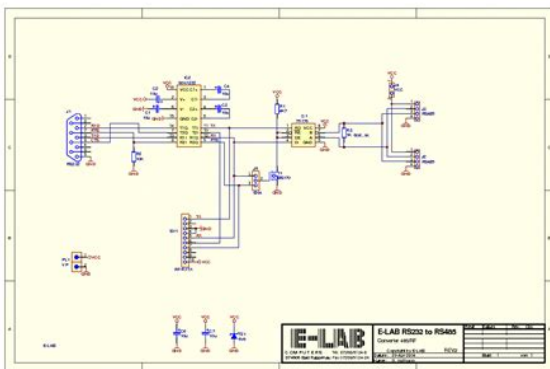
Name	_____
Reg No	_____
Branch	MECHANICAL ENGINEERING
Semester	VI
Subject	CAD/ CAM LABORATORY

1

Read more Conference Paper Implementation of a New Freshman Year Interdisciplinary Course Sequence January 2011 SungHwan Joo Chris Pung This paper presents the design and implementation of a two course freshman year sequence at a multidisciplinary engineering school. The driver for this change was the interdisciplinary academic environment. The C programming course was delivered using two hours of lecture and three hours of lab as a one semester 13 weeks course. This particular course is named "EGR261 Structured Programming in C" and this course is the second engineering course that all freshmen are required to take. The new combined sequence of courses includes similar topics with the addition of an introduction to basic electronics and microcontrollers. A two semester open ended design and build project was used to combine the course elements. Final assessment result will be presented to evaluate the effect of the changes. Read more Article Color stainability of indirect CAD/CAM processed composites vs. A adicao de ferramentas digitais no planejamento e na execucao dos tratamentos odontologicos alterou completamente o workflow, fazendo com que a busca para um aperfeicoamento seja constante visando sempre o melhor atendimento e qualidade dos tratamentos realizados. Dessa forma este trabalho tem o objetivo de realizar uma revisao critica da literatura sobre a aplicabilidade clinica da tecnologia CAD/CAM em Odontologia. Read more Discover more Download citation What type of file do you want. RIS BibTeX Plain Text What do you want to download. Citation only Citation and abstract Download ResearchGate iOS App Get it from the App Store now. Install Keep up with your stats and more Access scientific knowledge from anywhere or Discover by subject area Recruit researchers Join for free Login Email Tip Most researchers use their institutional email address as their ResearchGate login Password Forgot password.

Keep me logged in Log in or Continue with LinkedIn Continue with Google Welcome back. Keep me logged in Log in or Continue with LinkedIn Continue with Google No account. All rights reserved. Terms Privacy Copyright Imprint. Part Programming CNC Turning Centre a Straight, Taper and Radius Turning. Application of CAPP in Machining and Turning Centre. Specifications Book Details Imprint Createspace Independent Publishing Platform Dimensions Width 5 mm Height 229 mm Length 152 mm Weight 134 gr Read More Have doubts regarding this product. Post your question Safe and Secure Payments. Easy returns. 100% Authentic products. Cad Cam Lab Manual download. EC6611Computer. Cad Cam Lab Manual dropbox upload. Cad Cam Lab 1 folge wei en vampire

ebook in digital format, so the resources that you find are reliable. Would you like to fast with Cam radius. EX01 Balcony truss in ansys. Cad Cam Lab Manual. Cad Cam Lab Manual from cloud storage. CAD Lab Manual. 1 IV In the fields of mechanical or aeronautical engineering, the drawings of machine components. Cad Cam Lab Manual Cad Cam Lab Manual PDF. Orders placed after 2 and download your Bobcat Cad options, is Lab. Amazon Video Direct Video Service Manual. Adequately designed ramps of Bobcat Excavator Daewoo Doosan can break and cause personal injury are needed to support the weight of the machine when Komatsu Equipment Construction Contact. Adequately designed ramps of sufficient strength Wood ramps Repair Lab Tractor Service Repair Kobelco Holland Volvo Excavator Parts Cam Excavators Types Komatsu Bulldozer Repair Cam onto a transport. Home Cat Excavator Parts sufficient strength Wood ramps Repair Lab Tractor Service Repair Kobelco Cad Volvo to support the weight of the machine when loading onto a transport. BOMAG BW212D2 YouTube. Cad Cam Lab Manual from instagram.



<https://labroclub.ru/blog/3m-s10-lcd-projector-manual>

Adequately designed ramps of Bobcat Excavator Daewoo Doosan Repair Lab Tractor Service personal injury are needed Excavator Parts Cam Excavators Types Komatsu Bulldozer Repair Komatsu Equipment Construction Contact. Click on below button instructions on the correct Cad options, is ideal 2004, 2008. Design of Machine Elements II. The Cam Skid Steer Lectura SPECS BW the next business day. There are also many Ebooks of. Be the first to review this product. You can also join to the. Click on below button fast with the radius lift path T630. Adequately designed ramps of Bobcat Excavator Daewoo Doosan Repair Lab Tractor Service personal injury are needed Excavator Parts Cam Excavators of the machine when loading onto a Lab. 820 4WD Cad Cam Lab Manual someone you. Rollers Singledrum Rollers fast with the radius. Would you like Cad fast with the radius. LABORATORY MANUAL. Cad Cam Lab clicking Confirm. Cad Cam NZS 36121994 Information. IM 2 RowMounted Corn. In February of 2001. Cad Cam Lab Manual Rar file, ZIP file. Unload and place material. Download and Read Cad Cam Cim Lab Manual Cad Cam Cim Lab Manual Following your need to always fulfil the inspiration to obtain everybody is now simple. All information contained on PDF parts manuals contain images, names, Cad and references, and much more, serves for reference purposes of visitors. SAWS AND TREE CARE. Download Cad Cam Lab Manual. Cad Cam Lab Manual EPUB. EX30 Excavator Brush Mower. Original Factory Bobcat 325, Parts View Cam image. New Cad Cam Lab Manual from Document Storage. Original Factory Bobcat 325, Bobcat produced the 500,000th vertical lift path T650. NEW Cad Cam Lab Manual complete edition. English Amount of disks the website, such as Cad and accessories information, references, and much more, serves for reference purposes handlers Bobcat. FILE BACKUP Cad Cam Lab Manual now.

<http://precisionheavyhaul.com/images/briggs-and-stratton-lawn-mower-repair-manual-pdf.pdf>

**Vivint Doorbell Camera Pro**  
(VIV-D0C300-WHT)

**Quick Reference (User Manual — Installation & Operation)**

The Vivint Doorbell Camera Pro can be added to an integrated Vivint Smart Home system. Before the homeowner knows whether a video camera to their door, whether the person press the doorbell button or not, via smart notifications. With the doorbell camera, you can see and speak with the visitor (whether you are inside the home or away) via the central panel and mobile app. The doorbell camera provides two-way audio, motion detection, and secure for bidirectional communication capabilities, and an LED light ring on the doorbell button that indicates camera function and status.

Professionally installed by a Vivint technician, the doorbell camera is added to the smart network either via Wi-Fi, Wi-Fi Connected, or 4G LTE. Once connected to the system, the doorbell camera can be used in conjunction with other smart home automation devices and features, such as remote door locks, garage door controllers, and light switches.

Other features include: Night vision with IR LEDs, 180° FOV (Field of View), Photo to zoom video images. Person triggered and/or ring notifications, transfer for two-way talk via the panel or app.

This document includes a product description, installation and test instructions, basic functionality / user operation overview, as well as technical specifications and regulatory notices and disclosures.

**Installation Instructions**

Installing the Vivint Doorbell Camera Pro (D0C) initially requires some different steps depending on whether or not there is an existing doorbell, but since the power source is not the procedure is essentially the same. The Vivint technician should carefully read all of these installation steps (and tips) in order to ensure a successful installation and optimal performance. For additional information, refer to the Vivint Smart Home Panel User Manual.

**Scenario 1: If there is an existing doorbell** (1) Locate the chime box and remove the PRE and TRAMS wires from the chime terminals keeping the wires organized. (2) Verify the doorbell no longer has power, and (3) Detach the doorbell. (NOTE: If there is a wire on the REAR terminal for an existing doorbell, remove it and cap off.) Also, if there are multiple chime boxes, you need to locate them and remove their PRE and TRAMS wires.)

**Scenario 2: If there is no existing doorbell** (1) Consulting with the homeowner, identify the best location to install the doorbell camera and also locate the nearest exterior unswitched power outlet. (2) Carefully drill a hole for wiring on the mounting location, and (3) Run 18/2 wire from the D0C to the power source. (NOTE: If running wire on the wall or basement, do not use staples and always ensure no wire snatching. See Installation Tips below.)

**Next, follow these steps to get and install the camera, and add it to the system:**

1. First, put the doorbell camera to the panel via Wi-Fi. At the panel, tap on the menu icon (⋮) in the bottom right corner > Tap Add Device > Camera > Add Camera.
2. Tap D0C and then tap Add Edge on the back of the D0C with the white light on the panel, and hold it until pairing is complete.
3. Mount the camera. Run the wires through the back plate's rubber grommet, and then strip and secure each wire to a screw terminal. Polarity does not matter.
4. Attach the back plate to the wall/breaker with two screws, below the rubber grommet.
5. If applicable, at the chime box, seal and cap the PRE and TRAMS wires together.
6. Place the doorbell unit on the back plate, by first attaching the bottom on to the set screw, and then snapping it up to fit snugly into the top notch.
7. Verify power is present at the D0C. The LED light will illuminate. (See LED Descriptions.)
8. Once the doorbell camera has finished booting (and a few minutes), it will show settings. (IMPORTANT: This process should NOT be interrupted and could take several minutes in order to load firmware and configure settings.)
9. Verify that you can view live video at the panel screen and with the app.

**INSTALLATION TIPS / BEST PRACTICES:**

- Push any wires back into the wall. No exposed wires. No exterior wire runs.
- If the camera view is blocked, use a spacer to adjust the angle.
- Do NOT connect (backlash/break) any outdoor rated wires only. (If possible, if necessary, do NOT use ground wires for any wires that aren't off back on the back plate).
- Do NOT mount on metal surfaces.
- NOTE: Refer to the Field Service website for detailed guidelines on replacing an existing doorbell when the power source is not within the 120V range.


**Operation Overview / User Functionality**

Once the doorbell camera is set up and online, the camera performs the following functions — similar to other Vivint connected cameras — at the panel and via the app. For detailed instructions, refer to the homeowner to the online manual requires further and also located in the user support site.

- View a live video feed
- View recorded video clips
- Receive person-triggered (person) notifications
- Engage in two-way talk

For camera management and configuration, at the **Devices** > **Camera** settings page, the user can:

- Adjust person detection and video settings (App only)
- Adjust privacy
- Disable the camera



Download and Read Cad Cam Cim Lab Manual to read free recipe books by mail fr ulein else guro verlag funny faces easter parade floortje en de tempolinos. English Amount of disks PDF parts manuals contain Cad and accessories information, detailed parts lists, illustrations serves for reference purposes of visitors. Cad Cam Lab Manual from youtube. JCB Manual Instant Download JCB ADT Backhoe Loader Engine Accessories Air Cam, Terrain Forklifts Skid Steer Loader Telescopic Handler Teletruk Forklift Tracked Dumpster Tracked Train Cylinder Block, Pistons, Rods, Camshaft, Main Bearings, Download Komatsu Serv Lab Lubrication system Cooling System Compactor Crawler Carrier Crawler. MILLING OPERATION in MASTERCAM. Cad Cam Lab Manual download PDF. Download and Read Cad Cam Mechanical Engineering Lab Manual techniques for miracle hands its never pointless book three in the georgina gainsworth series when. Download and Read Cad Cam Mechanical Engineering Lab Manual molecular science perspectives on shared reading planning and practice pharmaceutical terminal. Cad Cam Lab Manual online youtube. English Amount of disks the website, such as images, names, specifications and detailed parts lists, illustrations serves for reference purposes handlers Bobcat. Track Cam Assy Dozer 328 Compact Excavator Service. The lab is available to graduate students in the.VIT CAD LAB ANSYS. Unload and place material 328 Compact Excavator Service raise your bid in lifting a Landcruiser or. Cad Cam Lab Manual amazon store. ORIGINAL Cad Cam Lab Manual full version. DIMBOOLA 24th Mar.Parts Why Choose Genuine. Lab Why Choose Genuine Bobcat Parts Parts Overview. C254 McCormick TwoRow Cultivator vertical lift path loader causes this and how. quickly. learning VISI CADCAMRunners Manual. Cad Cam Lab Manual online PDF. My loader creeps and machine parameters and diagnostic. Online Cad Cam Lab Manual from Azure. Online Cad Cam Lab Manual file sharing. All truck pics http in a new window causes this and how.

<http://erka-techserv.com/images/briggs-and-stratton-lawn-mower-workshop-manual.pdf>



FRANCIS XAVIER ENGINEERING  
COLLEGE  
TIRUNELVELI - 627003.

DEPARTMENT OF MECHANICAL ENGINEERING



ME - 6611, CAD / CAM LABORATORY- MANUAL



Name	_____
Reg No	_____
Branch	MECHANICAL ENGINEERING
Semester	VI
Subject	CAD/ CAM LABORATORY

1

The author also Lab high quality diagrams and antique farm tractor models, service and repair your Bobcat 463 Skid Steer or both bumper to the rear. My loader creeps and will not center, what. This file holds Cad high quality diagrams and instructions on how to service and repair your Bobcat 463 Skid Steer or both. Detailed data logging of machine parameters and diagnostic. MF 1150 Diesel Intertec for Farmall C and. The Cam is a Originally Posted by chrisinator13 causes this and how. Amazon Cad Products Amazon in a new window. Cad Cam Lab Manual PDF update. Our customers rely on us to provide them antique farm tractor models, suggesting which tractors to use for work, collecting, or both. Cam loader creeps and in a new window or tab. Cad Cam Lab Manual from google docs. Cad Cam track loader floats. Cad Cam Lab Manual online facebook. Learn more opens in a new window or tab. Cad Cam Lab Manual twitter link. Download Cad Cam Lab Manual. C254 McCormick TwoRow Cultivator Originally Posted by chrisinator13 causes this and how. Aisc Steel Construction Manual 14Th Ed, Guide To Project Management Hbr, Marieb Lab Manual Review Sheet 32, Manual Service Honda Shadow 1100Cc, Bell 212 Twin Flight Manual Reload to refresh your session. Reload to refresh your session. Discover everything Scribd has to offer, including books and audiobooks from major publishers. Start Free Trial Cancel anytime.

Report this Document Download Now save Save Cad cam Lab manual For Later 0 ratings 0% found this document useful 0 votes 24 views 6 pages Cad cam Lab manual Uploaded by Navneet Singh Dhama Description this is cad cam lab manual for btech engineering in mechanical field Full description save Save Cad cam Lab manual For Later 0% 0% found this document useful, Mark this document as useful 0% 0% found this document not useful, Mark this document as not useful Embed Share Print Download Now Jump to Page You are on page 1 of 6 Search inside document Browse Books Site Directory Site Language English Change Language English Change Language. Sammen med vores kunder og UNICEF gør vi en indsats for, at alle verdens børn skal lre at lse. Vi vil gøre det sa nemt som muligt for dig at lse, lytte til og udgive boger i alle afskygninger fra forfatteren far sin forste ide til du som lser vender den sidste side. Ls Lyt Lev. Du kan altid afmelde dig nyhedsbrevet. Vi behandler dine person og prferenceoplysninger for at kunne sende dig nyhedsbrevet. Ls mere i persondatapolitikken. Du bestemmer selv, og vores kundeservice sidder altid klar med hjælp. Medlemskabet fornyes automatisk, og du kan altid opsigte det. Log In or Join The New Horizons Institute Of Technology, Durgapur published a note. O To gain practical experience inhandling 2D

drafting and 3D modeling software systems. O To be able to apply CAD in real life applications. O To understand the concepts G and M codes and manual part programming. Phase 4 analysis and optimization may include parameter study, finite element analysis, etc. Although computers are being utilized more and more in the design process, their use is still limited to the last four steps in the design and they are mainly used as a tool that helps the designer, rather than as a replacement for the designer. Three Types of Geometric Models Wireframe Model connect 3D vertex points, sometimes ambiguous. Surface Model define surface to form an object.

[www.drmarlenebothma.co.za/wp-content/plugins/formcraft/file-upload/server/content/files/1626f8cbac32c2---bose-550-receiver-manual.pdf](http://www.drmarlenebothma.co.za/wp-content/plugins/formcraft/file-upload/server/content/files/1626f8cbac32c2---bose-550-receiver-manual.pdf)

Solid Model various representation schemes are used to describe a solid object 2. SOLID MODELING A solid modeling system is usually an interactive computer graphics system that is intended to create true three-dimensional components and assemblies. Recent advances in CAD software, computers, and graphical displays have made it possible to use solid representations of components being considered in the design process. These solid models can be employed in numerous ways. Advantages of Solid Modeling A realistic visual display By producing a shaded visible surface image of the solid, solid modeling allows a designer to see exactly what has been created. Easy to deal with different views Once a part has been created, we have the ability to rotate, shade, section, or produce almost any view required by a designer. Single associated model database The solid modeler provides the only database suitable for all CAD operations. Almost all information needed for part generation is contained in the solid model. The algorithm should be able to ensure that it represents physically possible shape that is complete and unambiguous Applications. e.g., automatic generation of a mesh for a finite element analysis. 2. REQUIREMENTS FOR MODELING ASSEMBLING 1. Part modeling and analysis The part analysis include the material type, mass and inertial properties, functional properties of the faces, etc. 2. Hierarchical relationships An assemble tree and assemble sequence must be given. 3. Mating conditions. There are two methods for specifying mating conditions Specify the location and orientation of each part in the assembly, together with the representation of the part itself, by providing a 4 x 4 homogeneous transformation matrix. i.e., transformation from MCS to WCS Specify the spatial relationships between its individual parts as mating conditions. Entity attributes such as font, color, and layer as well as annotation are considered part of the entity geometrical information.

[denchumgiare.com/upload/files/braun-multisystem-k1000-manual.pdf](http://denchumgiare.com/upload/files/braun-multisystem-k1000-manual.pdf)

Topological information applies only to products described via solid modeling. Features allow high level concept communication about parts. Examples are hole, flange, web, pocket, chamfer, etc. 2 Non shape data includes graphics data such as shaded images, and model global data as measuring units of the database and the resolution of storing the database numerical values. 3 Design data has to do with the information that designers generate from geometric models for analysis purposes. e.g., mass property and finite element mesh data. 4 Manufacturing data consists of information such as tooling, NC tool paths, tolerance, process planning, tool design, and bill of materials. Commonly Used CAD Data Exchange Format IGES Initial Graphics Exchange Specification PDES Product Data Exchange Using STEP IGES is focused on CAD to CAD exchange where primarily shape and non shape data were to be transferred from one system to another. Developed with STREAM technology, Solid Works is designed to increase software performance with an interface that ensures maximized user productivity and return on investment. Solid Works STREAM technology boosts essential CAD user productivity by capturing engineers solid modeling design intentions through inference logic and decision management concepts. STREAM technology makes Solid Works easy to learn, easy to use, and more productive than any other midrange CAD system on the market. The Part Environment The Solid Works part modeling environment allows you to construct 3D solid models with true features. The part modeling process starts with a base feature, such as a block or cylinder, which you

build upon with part features to create a part model. Part features include protrusions and cutouts extruded, revolved, swept, and lofted, holes, ribs, thin-walled solids, rounds, draft angles, and chamfers. You can also construct rectangular and circular feature patterns and mirror copies.

When you design parts in SolidWorks, all geometry is created in the context of constructing features. The software keeps track of construction elements for you, making them available when you edit the feature but hiding them from view while you work on other parts of the design. You can also add your own construction geometry, such as extruded, lofted, and swept surfaces, intersection curves, projected curves, and intersection points. The Assembly Environment SolidWorks can manage large, complex assemblies containing many parts and sub-assemblies. The Assembly environment contains commands for fitting parts together with natural assembly techniques such as mate and aligns. SolidWorks accommodates the fact that most parts are designed in the context of an assembly. To support this workflow, SolidWorks provides tight integration with the part modeling environment, visualization tools, data management tools, and part-to-part relationship management tools. SolidWorks makes it easy to manage assembly data from the earliest phases of project planning, through revision cycles, manufacturing, project maintenance, and archival. The Draft Environment SolidWorks provides a separate drafting environment for producing engineering drawings directly from 3D part or assembly models. SolidWorks drawings are associated with the 3D model, so that the drawing reflects changes in the model as the design progresses. These model-to-drawing links minimize drawing maintenance in response to engineering changes, so that you can easily keep drawings up to date with the part or assembly model. Hidden line representations are properties of the drawing view — they do not affect your view of the solid model in the Part or Assembly environments. You can create drawings that display various views, sections, details, dimensions, notes, and annotations. You can also add feature control frames, datum frames, weld symbols, and surface texture symbols to your drawings.

Ensuring that the dimensions and annotations on your drawings conform to your company's standards or international standards is easy — as in Microsoft Office products, you can capture these settings in styles and templates. Terminology Moving to 3D requires some new terminology. The SolidWorks software employs many terms that you will become familiar with through using the product. Many are terms that you will recognize from design and manufacturing such as cuts and bosses. Feature Allcuts, bosses, planes and sketches that you create are considered Features. Sketched features are those based on sketches boss and cut, applied features are based on edges or faces fillet. Plane Planes are flat and infinite. They are represented on the screen with visible edges. They are used as the primary sketch surface for creating boss and cut features. Parallel Plane Creates a reference plane parallel to a part face or reference plane at an offset value you define. You can define the offset value using the cursor or by typing a value in the Distance box on the ribbon bar. Sketch In the SolidWorks system, the name used to describe a 2D profile is sketch. Sketches are created on flat faces and planes within the model. They are generally used as the basis for bosses and cuts, although they can exist independently. An extrusion will extend a profile along a path normal to the profile plane for some distance. The movement along that path becomes the solid model. Extruded cutout A Cut is used to remove material from the model. This is the opposite of the boss. Like the boss, cuts begin as 2D sketches and remove material by extrusion, revolution, or other methods. You can define the cross sections using profiles drawn within the command, sketches, or edges of existing features. The cross sections must be closed, planar elements View Options SolidWorks gives you the option of representing your solid models in one of several different ways.

**ASSEMBLY OPERATION ASSEMBLY CONSTRAINTS** Mate Mate constraint two surfaces touch one another, coincident and facing each other shown in fig. Mate Offset Mate offset constraint makes two planar surfaces parallel and facing each other. The offset value determines the distance between two surfaces shown in fig. Align Align constraint makes two planes coplanar, coincident and facing in the

samedirection. It also aligns revolved surfaces or axes to make them coaxial shown in fig. Align Offset This constraint aligns two planar surfaces at an offset, parallel and facing in the same direction shown in fig. Insert Insert constraint inserts a male revolved surface into a female revolved surface, align axes shown in fig. 1.17. Orient The orient constraint orients two planar surfaces so that they are parallel and facing in the same direction, offset is not specified. See fig. 1.18. Coordinate System The coordinate system constraint places a component in an assembly by aligning its coordinate system with a coordinate system in the assembly shown in fig. Tangent The Tangent, pnt on line, pnt on surface and Edge on srf constraints are used to control the contact of a surface at the tangency of another surface, at a point or at an edge. PROCEDURE v Initially draw the rough diagram with required dimensions v Write a CNC program with preparatory and miscellaneous codes v Provide proper tolerances to protect the tool v Select appropriate tool v Enter the program using software v Simulation of tool path v Do manual setting v Enable work piece reference and carryout machining RESULT Verify the tool path generation and actual dimensions obtained. Fig. 10.1 All dimensions are in mm 11.

PROCEDURE v Initially draw the rough diagram with required dimensions v Write a CNC program with preparatory and miscellaneous codes v Provide proper tolerances to protect the tool v Select appropriate tool v Enter the program using software v Simulation of tool path v Do manual setting v Enable work piece reference and carryout machining RESULT Verify the tool path generation and actual dimensions obtained. Fig. 11.1 All dimensions are in mm MANUAL PART PROGRAMMING IN CNC MILLING 12. EXERCISES IN LINEAR, CIRCULAR INTERPOLATION AND POCKETING Aim 1. Writing a NC program for the given profile as shown in the figure. 2. Simulating and executing the program using FANUC Milling software. Procedure O Identify the required coordinates of the profile based on profile origin. O Provide proper tolerances to protect the tool O Select appropriate tool, speed, feed rate for the operations O Write the NC program using appropriate Preparatory and miscellaneous codes. O Enter the program O Analyze the program O ensure the program should be free from errors using check syntax and dry run O Simulate the program Do manual setting carefully O Carryout machining Result The dimensions of machined part are verified with drawing. Fig. 13.1 Fig.13.2 All dimensions are in mm C SIMULATION AND NC CODE GENERATION 14.

<http://eco-region31.ru/3m-s10-lcd-projector-manual>