



**File Name:** bush tv combo manual.pdf

**Size:** 2689 KB

**Type:** PDF, ePub, eBook

**Category:** Book

**Uploaded:** 15 May 2019, 16:13 PM

**Rating:** 4.6/5 from 727 votes.

**Status:** AVAILABLE

Last checked: 17 Minutes ago!

**In order to read or download bush tv combo manual ebook, you need to create a FREE account.**

[\*\*Download Now!\*\*](#)

eBook includes PDF, ePub and Kindle version

[Register a free 1 month Trial Account.](#)

[Download as many books as you like \(Personal use\)](#)

[Cancel the membership at any time if not satisfied.](#)

[Join Over 80000 Happy Readers](#)

### Book Descriptions:

We have made it easy for you to find a PDF Ebooks without any digging. And by having access to our ebooks online or by storing it on your computer, you have convenient answers with bush tv combo manual . To get started finding bush tv combo manual , you are right to find our website which has a comprehensive collection of manuals listed.

Our library is the biggest of these that have literally hundreds of thousands of different products represented.



## Book Descriptions:

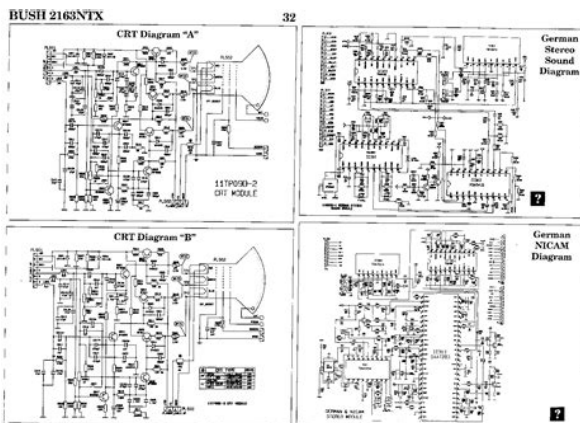
# bush tv combo manual



You may already be familiar with using a similar unit, but please take time to read these instructions. They are designed to familiarise you with the unit's many features and to ensure you get the very best from your purchase. Do not use any liquids near this TV. 2. Clean with a dry cloth only. 3. Do not block any ventilation openings and install in accordance with the manufacturer's instructions. Refer all servicing to a qualified technician. Warning To prevent fire or electric shock hazard, do not expose the unit to any liquids or moisture. Please place some soft material over the front of the screen to protect it from any damage. 2. Remove the screws from the lower part of the television, where the base joins to the TV, and take away the stand put the stand somewhere safe for future use. You can choose any of the above languages or countries. Use the Buttons manually scan through the DTV Manual Tune channels, then press OK to search. DTV Manual Tuning VHF CH Press OK to search Normal Good. The favourite Icon will then be displayed next to the program. Press the FAV Button again to cancel setting. Once in Option Menu, press buttons to select the settings you wish to adjust. Press MENU button to return to the Main Menu. OSD Language English Audio Languages Subtitle Languages. The default password is 6666. The EPG Menu is used to look at what is being broadcasted in DTV or Radio modes. Press the EPG Button to access the EPG Menu. You will receive detailed program information of the channel you are currently watching as well as the 7 Day Program guide. Do not attempt to disassemble the cabinet or make any adjustments. Please refer all servicing to a qualified professional. DVD OPERATION Disc Formats Supported by this DVD Player Multiangle Dolby Digital. When a VCD is playing with PBC off, press the Numeric keys to select a track directly. Once in the Setup Menu use the Cursor Buttons to select your desired Settings. To exit the Setup Menu, press the Setup Button again. <http://nandishoverseas.com/UserFiles/dell-e172fp-monitor-manual.xml>

- **bush tv dvd combo manual, bush 24 inch tv dvd combo manual, bush 19 inch tv dvd combo manual, bush 32 inch tv dvd combo manual, bush tv combo manual, bush tv combo manual download, bush tv combo manual pdf, bush tv combo manual 2017,**

## bush tv combo manual free.



In the Setup Menu, you may choose any of the following options LANGUAGE SETUP Use the Cursor Buttons in the Setup Menu to select the Language option and display the Language. Use the Cursor Buttons to select the Rating option in the Setup menu and to display the Rating submenu Parental Control The Parental Control Setting allows you to lock the DVD Player. You must enter the default password 6666 before setting your own password. To navigate this menu, use the Buttons to scroll through the directory options or to select tracks or files you wish to play. Filter This option allows you to filter and categories your file list in the directory menu. Ensure the power outlet is operational. Ensure the power cord is not damaged. Ensure the power plug is connected firmly to the outlet. PICTURE BUT NO SOUND Ensure the audio is not set to mute. Normal Picture Check AV cables are Mute. The mains plug is used to disconnect TV set from the mains and therefore it must remain RISK OF ELECTRIC SHOCK readily operable. This television is designed to consume less energy to help save the environment. Install two AAA batteries. Picture mode can Mode be set to one of these options Cinema, Game, Sports, Dynamic and Natural. Contrast Sets the lightness and darkness values of the screen. Brightness Sets the brightness value for the screen. Equalizer Selects the equalizer mode. Custom settings can be made only when in user mode. Balance This setting is used for emphasizing left or right speaker balance. Headphone Sets headphone volume. Whilst Store Store Mode Mode is enabled, some items in the TV menu may not be available. DLNA renderer feature allows you to share files stored on your smartphone. You can edit this channel list, set favourites or set Your TV is capable of finding and updating automatically active stations to be listed by using the Channel List via the Aerial signal or over the Internet. <http://www.creptiles.dk/userfiles/dell-e172fpt-service-manual.xml>



The standard values of Advanced Mode the transmission speed are the theoretical maximum. While in Advanced Mode, press RED button to edit values for the wireless standards. For best home network streaming with this set, the supplied Nero software should be installed. Installation finishes. The Help us to Enhance Nero Software screen is To install Nero MediaHome, please proceed as displayed. In order to offer a better service, Nero follows is collecting anonymous data to determine which Note To use DLNA function, this software should be installed features are used and what problems, if any, occur. Select the Skype app from the portal section to start a conversation. If you already have a Skype account, enter your name and password correctly. Enter full name, skype name or email address to find and add. Use remote control or virtual keyboard to enter keyword. Recent history Incoming call Outgoing call Missed call Icon meaning Skype history can be seen in this section. A small dialog box will appear in lower right corner of TV screen whether user watches TV or is browsing through Skype. Use the remote control button and choose your action. Your TV may not support all resolutions. Safety Information Wipe the disc from the center out. CAUTION DVD Player is a class 1 laser product. However this product uses a visible laser beam which could cause hazardous radiation exposure. When DVD menu root menu is active, this button functions as "button select" selects the highlighted item in menu if this is not prohibited by the disc. C. Below are main functions of commonly used remote control buttons. Buttons DVD Playback Movie Playback Picture Playback Music Playback Play Play Play. Basic Play 13. Slide Show is disabled when the ZOOM mode 1. Press on the power button is on. 2. Please insert a disc to the loader. DVD Troubleshooting The disc will be automatically loaded and play commences if the disc does not have any menus.

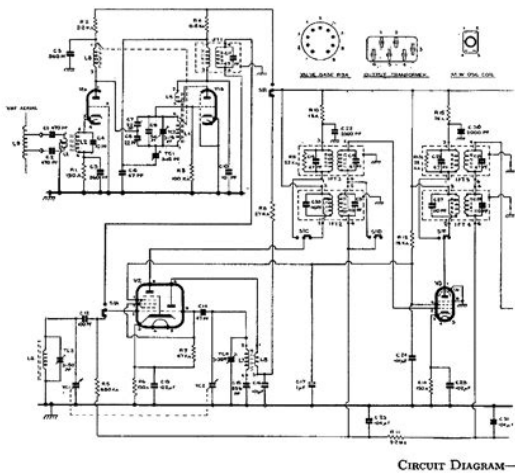
Any defect that arises due to faulty materials or workmanship will either be replaced, refunded or repaired free of charge where possible during this period by the dealer from whom you purchased the unit. However, if you do not want to take up too much of your disk space, you can always download it in the future from ManualsBase. The option to print the manual has also been provided, and you can use it by clicking the link above Print the manual. If you want to quickly view the content of pages found on the following pages of the manual, you can use them. You may already be familiar with using a similar unit, but please take time to read these instructions. They are designed to familiarise you with the unit's many features and to ensure you get the very best from your purchase. Safety is important Your safety and the safety of others is important. Therefore, please ensure you read the Safety Instructions before you operate. Do not use any liquids near this TV. 2. Clean with a dry cloth only. 3. Do not block any ventilation openings and install in accordance with the manufacturer's instructions. 4. Do not place this TV near any heat radiating sources, such as; heaters, stoves, or other devices including amplifiers that produce heat. 5. Please ensure that the power cord is protected from damage i.e. beRefer all servicing to a qualified technician. Warning To prevent fire or electric shock hazard, do not expose the unit to any liquids or moisture. Do not expose the TV and power adaptor to water dripping or splashing and no objects filled with any liquids, such as vases, should be placed on or near the unit. Locate the bottom at the stand. Never connect straight to a DC power supply. Locate the TV in a room where light does not strike the screen. Please place some soft material over the front of the screen to protect it from any damage. 2.

**BUSH****Models VHF90, VHF90C**

**General Description :** Seven-valve (including rectifier), two-waveband (M.W./V.H.F.), combined A.M./F.M. table receiver. Ferrite-rod aerial for M.W. reception; built-in V.H.F. condensed dipole with provision for external dipole aerial. Model VHF90 is housed in a dark-brown plastics cabinet, whilst Model VHF90C has a similar chassis in a cream plastics cabinet.

**Power Supply :** A.C./D.C. mains, 200–250 volts. Chassis is connected directly to one side of the mains supply.

**Valve Functions :** (V<sub>1</sub>) UCC85 (F.M. only, section (a) grounded-grid R.F. amplifier, section (b) self-oscillating mixer); (V<sub>2</sub>) UCH81 (A.M. frequency changer, F.M. heptode section as I.F. amplifier); (V<sub>3</sub>) UF89 (dual I.F. amplifier); (V<sub>4</sub>) UF89 (dual I.F. amplifier and partial limiter on F.M.); (V<sub>5</sub>) UABC80 (A.M. signal detector/A.G.C. rectifier, F.M. ratio detector, with triode section as common A.F. amplifier); (V<sub>6</sub>) UL84 (output); (V<sub>7</sub>) UY85 (half-wave rectifier).



<http://www.drupalitalia.org/node/78375>

Remove the screws from the lower part of the television, where the base joins to the TV, and take away the stand put the stand somewhere safe for future use. 3. Use the four screws provided to fix the TV onto a wall mount. Each item has a 3 digit TEXT page number. If Use the Buttons manually scan through the DTV Manual Tune channels, then press OK to search. The favourite Icon will then be displayed next to the program. Press the FAV Button again to cancel setting. 2. PICTURE MENU To enter the Picture mode, press the MENU button and then press or buttons to select the Picture Menu. Once in the Picture mode, press the or buttons to select the picture settings you wish to adjust. To return to the Once in Option Menu, press or buttons to select the settings you wish to adjust. Press MENU button to return to the Main Menu. The default password is 6666. Please set a new password to so it is easy to remember. Follow the on screen steps to set. Lock System Set Password Block Program Press the EPG Button to access the EPG Menu. You will receive detailed program information of the channel you are currently watching as well as the 7 Day Program guide. PROGRAMME GUIDE TIME 28 Apr 0439 Please refer all servicing to a qualified professional. DVD OPERATION Disc Formats Supported by this DVD Player 32 9 Multiangle Dolby Digital KODAK picture CD MPEG4 files on discs Subtitle choices LB 8 169 R RESTRICTED MP3 files. If you have a question to ask, need some advice or are having any issues, then please contact us using one of the options within this page. Please also scroll down this page to see further support information. Try to power on using the button on the TV Replace the batteries in your remote control Unplug your TV from the mains for 60 seconds, replace the plug and try again. If the issue persists, please contact us using the details on the right hand side of this page. All you will need is a smart phone with a camera and of course your remote control!

<http://apartmangyula.com/images/boxxer-race-2004-manual.pdf>



Please click here for further details. If you experience this follow the troubleshooting below. Unplug your TV from mains power Find the Standby Button on your the TV and hold it in if unsure, refer to your manual to find this While still holding the standby button, Reconnect the TV to the power If your TV is connected to an extension lead, please try connecting it directly to the mains as power consumption issues may cause this fault If you continue to have issues with the standby light flashing please call our helpline on 0345 604 0105 with your TV's Model and Serial Number. A subscription will be required for this service. You can check your aerial requirements here. If you have gone past this section already, you can reinstall the television via the Install and Retune menu. For further advice on how to do this, please contact Argos Tech Support on 0345 604 0105, well have you up and running in a few minutes! Any defect that arises due to faulty materials or workmanship will be repaired free of charge or if applicable the product will be replaced or the purchase price refunded where possible during this period by the dealer from who you purchased the unit. The guarantee will be rendered invalid if the product is resold or has been damaged by inexpert repair. We do not retain or indeed use your email address for any other purposes. Bush is a registered trademark of Argos Ltd. We reserve the right to update, alter or remove this website without prior notice. If you do not have Adobe Reader on your PC, click for free download. If your model is not listed below, unfortunately, we do not have an electronic copy of the user manual. In order to identify the correct model of your TV, click here. Therefore, please ensure you read the Safety Instructions before you operate this unit. Warranty In the unlikely event that your product fails to work normally, please call the below Bush warranty number to discuss the problem with one of our qualified service engineers.

<http://genialica.com/images/boxxer-09-manual.pdf>



Australia Bush Warranty 1800 509 394 New Zealand Bush Warranty 0800 450 259 Servicing is required when the TV has been damaged in any way, such as; if the power supply cord or plug is damaged, if liquid has been spilled or objects have fallen into the TV, if the TV has been exposed to rain or moisture, if does not operate as per this manual, or if it has been dropped. 9. The TV should not be exposed to dripping or splashing and no objects filled with liquids, Such as vases, should be placed on the apparatus. 10.If the television is to be built into a cabinet or similar enclosure, a small amount of distance should be maintained to ensure ventilation. Heat build up will reduce the service life of your television, and can also be dangerous. ADDITIONAL SAFETY NOTES Never tamper with any components inside the TV, or any other adjustment controls not mentioned in this manual. All LED LCD TVs are high voltage instruments. When you clean the unit or cabinet turn off the power and use a dry soft cloth. During thunder and lightning, unplug the power cord and antenna cord to prevent damage to your TV. All repairs to this TV should only be performed by qualified TV service personnel. Refer all servicing to a qualified technician. Warning To prevent fire or electric shock hazard, do not expose the unit to any liquids or moisture. Do not expose the TV and power adaptor to water dripping or splashing and no objects filled with any liquids, such as vases, should be placed on or near the unit. Please ensure that this product is kept away from direct sunlight and heat sources. Do not block the any of the ventilation openings. Slots and openings on the unit are provided for ventilation. The openings should never be blocked. Do not place the product on any unstable surfaces as this may cause the unit to fall and may cause possible damage or injury. Never place heavy or sharp objects on the panel or frame. Only use the AC adapter included with product.

Using any other adaptor will void your warranty. This marking indicates that this product should not be disposed with other household wastes. To prevent possible harm to the environment or human health from uncontrolled waste disposal, recycle it responsibly to promote the sustainable reuse of material resources. To dispose of your LED LCD TV contact your retailer where the product was purchased for tips on safe disposal when the time comes. 4 Locate the TV in a room where light does not strike the screen directly. Total darkness or a reflection on the screen can cause eyestrain. Soft and indirect lighting is recommended for comfortable viewing. Allow enough space between the TV and the wall to permit ventilation. Avoid excessively warm locations to prevent possible damage to the cabinet or premature component failure. Remote Control x 1 User s M anual x1 BatteryAAA x 2

ACCESSORIES Base Stand Assembly Instruction 1. Place the TV with the display side down on a flat surface. Use a cloth to protect. Locate the bottom at the stand. 2. Fix the bottom with turning the screw tightly on the stand. Please place some soft material over the front of the screen to protect it from any damage. 2. Remove the screws from the lower part of the television, where the base joins to the TV, and take away the stand put the stand somewhere safe for future use. 3. Use the four screws provided to fix the TV onto a wall mounting bracket not included via the four VESA standard holes on the back of the television. 6 INSTALLATION 100mm 100mm RED STANDBY. 3 Side buttons refer to image below Side Buttons 1 SOURCE Press the SOURCE Button to display the Input Source list. STANDBY Press this button to turn the unit ON from STANDBY mode. Input Impedance 75 unbalanced. AV EQUIPMENT Yellow video White audio L Red audio R or Pr Y W R W R G B R Blue Pb Green Y B G VIDEO EQUIPMENT with YPbPr W R G B R W R W R YPbPr Connection can support these video formats 480i, 576i, 480p, 576p, 720p, 1080i and 1080P.

<https://www.jemelectric.com/wp-content/plugins/formcraft/file-upload/server/content/files/1626e4011ad3f3--4-channel-mpeg4-dvr-manual.pdf>

A B NOTE For the DVD section, please refer to page 20. The number will be displayed on the top left. The page counter will turn until the page is displayed. Repeat this operation to view another page. If the counter continues to search, this means that the page is not transmitted. The coloured buttons correspond to the colour options at the bottom of the screen. The four coloured keys are used to access the items or corresponding pages. The coloured areas flash when the item or the page is not yet available. Certain pages contain sub pages which are automatically displayed. This key is used to stop or resume sub page acquisition. The indication appears top left. To freeze the page. To display or hide the concealed information. The user can set four favourite pages to be directly linked to the four color keys. While list mode is activated, it is not possible to use TOP or FLOP navigation with the colour keys. Each item has a 3 digit page number. If the channel selected does not broadcast teletext, 100 will be displayed and the screen will remain blank in this case, exit teletext and select another channel. Teletext is an information system broadcasted by certain channels which will provide detailed program information. It also offers access to subtitles for viewers with hearing problems or who are not familiar with the transmission language cable networks, satellite channels, etc. You can choose any of the above languages or countries. The TV will then automatically scan for all available stations and store them in the station list. 1. CHANNEL MENU Press the TV MENU Button to display the Channel Menu. 1 Auto Tuning An Auto Scan will search for all available ATV and DTV Stations and store them in the station list. To stop scanning at anytime, press the Menu or Exit Button. Use the Buttons manually scan through the DTV Manual Tune channels, then press OK to search.

OPERATION 3 ATV Manual Tuning Select the A TV Manual Tune option in the Channel Menu and follow the above steps. Then press the Green Teletext Button to Rename. Use the Buttons to select the character to rename and then press OK to confirm. Press the MENU Button or EXIT Button to exit this option. Note A TV programs can only be 5 characters. Use the Arrow Buttons to select the channel you wish to move. Then press the Yellow Button to select Move function. Once active use the Arrow Buttons to move and then press OK to confirm. Then press the Blue Teletext Button and the Skip icon will be displayed next to the program and it will be skipped in the program list. Press the Blue Button again to cancel the skip setting. NOTE Press the Red Teletext Button to save and store the channel you have manual scanned. 4. Program Edit Delete Press the Red Teletext Button to delete a program or channel in the channel list. 14 Program Edit 1 DTV 2 A TV Delete MENU OK Rename Move Skip Favourite The favourite Icon will then be displayed next to the program. Press the FAV Button again to cancel setting. To enter the Picture mode, press the MENU button and then press or buttons to select the Picture Menu. To return to the Main Menu, press the MENU Button. 2. PICTURE MENU Color Temperature Aspect Ratio Noise Reduction Screen Picture Mode Standard

PICTURE MENU Picture Mode Standard Contrast 82 Brightness 50 Color 50 Sharpness 50 Tint 50 Color Temperature Medium Red 40 Green 31 Blue 50 MENU NOTE 1 You can change the screen position in PC Mode only. You can adjust to horizontal, vertical, size and phase. 3.SOUND MENU To enter the Sound Menu, press MENU button and then press or buttons to select the SOUND Menu. Once in the Sound Mode, press or buttons to select the settings you wish to adjust. NOTE When you set the Auto Sleep option to ON, your TV will automatically enter into Standby Mode, when there has been no signal for 15 minutes.

Off Time On Time Sleep Timer Auto Sleep Time Zone Clock TIME Once in Option Menu, press or buttons to select the settings you wish to adjust. PVR File System OSD Language English OPTION Audio Languages Subtitle Languages Country Australia Restore Factory Default Check PVR File System Start USB Disk Format Time Shift Size Speed Free Record Limit 6 Hr. Select Disk C In PVR File System Menu you will be asked to format your USB Disk or Hard Disc for PVR Operation. Press the Menu Button to return to the Main Menu. Check PVR File System Press the OK Button to start checking the file system of your USB storage or Hard Disc. Once Success is shown after checking, you will then be able to begin recording or use Time Shift function. If FAIL is shown after checking, you then need to format your USB or Hard Disc and to be able to record or use Time Shift. Format When you format your USB or Hard Disc partition any saved data will be lost. Please ensure that you start with a blank partition on your Hard Disc to ensure you don't lose any data. PVR File System Type There are two types of formats FAT32 and Hi Speed Format. You can press or buttons to choose the type of formatting. If FAT32 is selected, you will have to format whole size of your USB or the allocated partition for recording. If Hi Speed Format is selected, you will then be able to press or buttons to select the size you wish to use for example 1G, 10G, 20G. or All. Once a particular size is booked for recording, you will be able to use the remaining space of your USB or Hard Disc for other data storage. Please note no matter which size is booked for recording, all the data in the allocated partition of the Hard Disc will be lost after formatting. Speed This will show the supported speed of recording. Record Limit This will show the approximate time you will be able to record on to your USB or Hard Disc.

File System Size PVR File System Type FAT32 MENU PVR File System Size All SD 13 Mins HD 3 Mins PHOTO MUSIC MOVIE TEXT OPERATION 17 6.LOCK MENU To enter the LOCK Menu, press MENU button and then press or buttons to select the LOCK Menu. The default password is 6666. FACTORY RESET NOTE If you wish to reset your TV, please select the Restore Factory Default option, this will clear all settings. Set Password Lock System LOCK Block Program Parental Guidance Off 7. APPLICATIONS MENU To enter the Applications Menu, press MENU button and then press or buttons to select the Applications Menu. This is where you will be able to view and play your USB files. APPLICATIONS DMP The supported formats are as below Photo JPEG, BMP, PNG Music MP3 Movie AVI, MP4, MKV Text TXT The EPG Menu is used to look at what is being broadcasted in DTV or Radio modes. You can also press the Red button to delete the program from your scheduled programs list. Schedule 1. Use to select a program and then press the Green Button or INFO key to display the highlighted programs information. INFO Do not attempt to disassemble the cabinet or make any adjustments. Reverse engineering and disassembly are prohibited. The product complies with the KODAK Picture CD format and will display KODAK Picture CDs. Confidential Unpublished Works. 1992 1997 Dolby Laboratories, Inc. All rights reserved. When a VCD is playing with PBC off, press the Numeric keys to select a track directly. 5 DVD MENU During DVD playback, press MENU to display the disc menu. 9 DVD SETUP Press to enter the system setting menu. Press again to pause play. 12 STOP Press to stop play of the DVD you are watching at anytime. 13 AB Press to repeat a segment of the disc you are watching between A and B. DVD mode 14 15 REW Press to rewind play in DVD, CD MP3 or VCD mode. Press repeatedly to scroll through rewind speeds. Press repeatedly to scroll through fastforward speeds.

For Super VCD, VCD, CD discs, press this button to search the desired disc time and track time and choose the desired track. FREEZE Press to freeze the picture you are watching. TITLE Press to display the DVD Main Menu. 37 A B Once in the Setup Menu use the Cursor Buttons to select your desired Settings. In the Setup Menu, you may choose any of the following options LANGUAGE SETUP Use the Cursor Buttons in the Setup Menu to select the Language option and display the Language sub menu OSD Language The OSD Language allows you to set Subtitle or change the on screen display language. Audio This option allows you to change the Audio Language of the DVD you wish to play. Select Video in the setup menu to display the Video submenu Subtitle This option provides the preset subtitle language. Select different MPEG4 subtitle encoding option. DVD Menu This option provides the films menu language options. VIDEO SETUP MPEG4 Subtitle optional Note Not all players support this item. SYSTEM SETUP Aspect Ratio In the Video Setup Menu use the Cursor Buttons to select the aspect ratio. Notes TV System elect the different TV systems. The image display ratio is related to the recorded disc format. Some discs may not be able to format to the aspect ratio of your choice. In the Video Setup Menu use the Cursor Buttons to s You must enter the default password 6666 before setting your own password. Setting the Password Once you have entered the default password you will be asked to input a four digit code of your choice. Note If you forget your password, you can use the universal password 6666 to unlock. MISC Setup Use the Cursor Button in the Setup Menu to select the MISC Menu and to display the sub menu Use Default Settings This allows you to reset your DVD settings and go back to the factory default setting. This will erase all previous settings. To navigate this menu, use the Buttons to scroll through the directory options or to select tracks or files you wish to play.

Filter This option allows you to filter and categories your file list in the directory menu. Repeat This option allows you to set a desired track to repeat. Mode The Mode option allows you to scroll through the below playing modes Normal This will play the tracks or files in the order they appear in the directory. Shuffle The Shuffle mode allows the tracks and or files to be played at random. Edit Mode This option allows you to edit the directory and files and tracks displayed. To exit the Edit Mode or cancel press the exit button. Program View This option allows you to display the track or file directly. Browser View This option allows you to display track directory. Add to Program This option allows you to create your own playlist in the track directory. Clear program This option allows you to clear any playlists you have created. PICTURE CD PLA YBACK To navigate this menu, use the Buttons to scroll through the directory options or to select tracks or files you wish to play. When you wish to view Picture files, the below directory will show. Ensure the power outlet is operational. POOR PICTURE OR SOUND Ensure you have set the player s Audio settings correctly Ensure the disc is not scratched or stained. Disc Error Displayed Ensure the disc is not warped, damaged or deformed. Ensure the disc is not badly stained or damaged. Ensure the disc format is compatible with the player. Please check whether you have tried to play a software CD. If so, please restart the player. REMOTE NOT WORKING Make sure the Main unit s POWER button is on. Ensure the remote batteries are working. Point the remote control directly at the player s IR sensor. Ensure the disc is not upside down. Ensure the disc is not distorted, stained or scratched. Ensure you have set the players Audio settings correctly. PICTURE BUT NO SOUND Ensure the audio is not set to mute. Troubleshooting Check A V cables are connected.

Normal audio This product is warranted for any defect in materials or workmanship This product is warranted for any defects in the materials or workmanship for a period of 12 months after the original date of purchase. This product is for normal domestic and of fice use only. This warranty does not cover damage from misuse or neglect, accidental damage, vermin infestation, excessive voltages such us lightning or power surges or any alternation that affects the performance or reliability of the product. In the unlikely event that your product fails to work normally, please contact the Bush Warranty on 1800 509 394 Australia or 0800 450 259 New Zealand and have your receipt of purchase on hand. This warranty is subject to the following provisions It is only valid

within boundaries of the country of purchase; The product must be correctly assembled and operated in accordance with the instructions contained in the manual; This product must be used solely for domestic purposes; The warranty does not cover accidental damage; The warranty will be rendered invalid if the product is resold or has been damaged by inexpert repair; The manufacturer disclaims any liability for incidental or consequential damaged. This warranty is in addition to, and does not diminish, your statutory or legal rights. PO BOX 6287 Silverwater NSW 181 1  
www.bushaustralia.com.au Bush Warranty 1800 509 394 Australia Bush Warranty 0800 450 259  
New Zealand WARRANTY 27. I have another bush remote which will allow me to select channels, but am not. This was working fine last night as TV and also playing back from one DVD connected by SCART just replacing another a few hours before. Remote has. One remote for all your devices. Guaranteeing optimal TV reception every time. Completely safe and functional for total protection. Download manuals, browse FAQs and watch instruction videos. Search for your product to find all related support information.

<http://www.drupalitalia.org/node/78376>