



File Name: canon 1ds mark ii manual.pdf

Size: 4813 KB

Type: PDF, ePub, eBook

Category: Book

Uploaded: 28 May 2019, 18:32 PM

Rating: 4.6/5 from 780 votes.

Status: AVAILABLE

Last checked: 14 Minutes ago!

In order to read or download canon 1ds mark ii manual ebook, you need to create a FREE account.

[**Download Now!**](#)

eBook includes PDF, ePub and Kindle version

[Register a free 1 month Trial Account.](#)

[Download as many books as you like \(Personal use\)](#)

[Cancel the membership at any time if not satisfied.](#)

[Join Over 80000 Happy Readers](#)

Book Descriptions:

We have made it easy for you to find a PDF Ebooks without any digging. And by having access to our ebooks online or by storing it on your computer, you have convenient answers with canon 1ds mark ii manual . To get started finding canon 1ds mark ii manual , you are right to find our website which has a comprehensive collection of manuals listed.

Our library is the biggest of these that have literally hundreds of thousands of different products represented.



Book Descriptions:

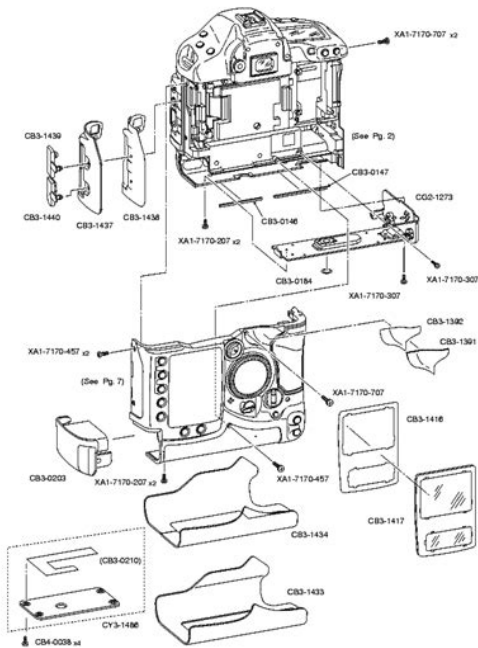
canon 1ds mark ii manual



If the camera or memory card is faulty and the images cannot be recorded or read by a personal computer, Canon cannot be held liable for any loss or inconvenience caused. Copyrights Copyright laws in your country may prohibit the use of images of people and certain subjects for anything but private enjoyment. If the product does not work properly or requires repair, contact your dealer or your nearest Canon Service Center. If the camera gets wet, remove the battery and promptly take it to the nearest Canon dealer. Wipe off any water droplets with a dry cloth. If the camera has been exposed to salty air, wipe with a wellwring wet cloth. Connect the power cord. The lamp will light. When you connect the battery, the recharging will start automatically and the lamp will light. When the battery is fully recharged, the lamp will blink quickly twice per sec.. It takes about 120 minutes to fully recharge a completely exhausted battery. Checking the Battery Level When the switch is set to There must be at least one card installed to enable shooting. If both cards are installed, you can select which card to record the images. Removing the Card Turn the switch to Never do the following while the access lamp is lit or blinking. Such actions may destroy the image data. You can press the shutter button halfway. There are three ways to use this dial 1 While pressing a button, turn the dial until the desired setting appears on the top LCD panel. While looking at the LCD monitor, you use the dial on the camera back to proceed to the next step.. Make sure you set the date and time correctly. Note that the CMOS sensor is very delicate. If possible, you should have it cleaned by a Canon Service Center. When you want to clean the CMOS sensor, use the DC Coupler Kit to power the camera with a household power outlet. The brush can scratch the CMOS sensor. Attaching the Neck Strap. The simultaneous recording of RAW and JPEG images can be selected when you select the image size. <http://geose.ru/userfiles/dm-24-manual.xml>

- **canon 1ds mark ii manual, canon 1ds mark ii manual pdf, canon 1ds mark iii manual, eos 1ds mark ii manual, canon eos 1ds mark ii manual pdf, canon 1ds mark ii repair manual, canon eos 1ds mark iii manual, canon 1ds mk ii manual, canon 1ds mark iii manual pdf, 1.0.**

CANON DIGITAL CAMERA EOS-1Ds MARK II



Select the image size Except for, highquality JPEGs will be recorded. On the other hand, the lower the recording quality, the higher the number of possible shots will be. A higher ISO speed number indicates a higher sensitivity to light. Therefore, a high ISO speed is suited for low light and moving subjects. However, the image may look more coarse with noise, etc. With a digital camera, the color temperature can be adjusted with software so that the colors in the image look more natural. The subject's white color is used as the criteria for adjusting the other colors. By selecting this image, you import its white balance data for the white balance setting. Then let go of the Each color can be corrected to one of nine levels. This is called white balance bracketing. If you set AEB in combination with white balance bracketing, a total of nine images will be recorded for a single shot. Provides natural looking color shades and tones. Effective Standard for bringing out the subject's natural colors. Provides ideal color tones for portraits. Then let go of the button. To register the tone curve, use the provided software. Parameter Tone Curve Change the image brightness, color tone, etc. When using both a CF card and SD card in the camera, you can select which memory card to use. Or you can have the same images recorded onto both cards for backup purposes. Difference between After image capture, you can have the image displayed from the CF card or SD card. The images are saved in the selected folder. By selecting a suitable AF point, you can shoot with autofocus while maintaining the desired subject framing. You can also set the AF mode to suit the subject or obtain the desired effect. This technique is called focus lock. Focus lock works only in the OneShot AF mode. Aim the Area AF or AF point over the subject and press the shutter button halfway to focus. Manual AF Point Selection One of three groups of selectable AF points can be used

1. <http://ntg-holdings.com/pic/dm-2000-manual.xml>



You can select one of the 45 AF points manually. 2. Any of the 45 AF points can be registered. Only one AF point can be registered. When the internal memory becomes full during continuous shooting, the camera cannot continue to take more pictures until the images are transferred to the memory card. Other easy-to-use features are also provided for diverse shooting. To suit the particular First set the switch to Then let go of the button. Evaluative Metering This is the camera's standard metering mode suited for most subjects even under backlit conditions. Increase the ISO speed. Decrease the ISO speed. This is called Shutter Priority AE. A fast shutter speed can freeze the motion of a fast-moving subject and a slow shutter speed can blur the subject to give the impression of motion. This is called aperture priority AE. The aperture values displayed will differ depending on the lens. This method is called manual exposure. Take the picture. You can make the image look lighter increased exposure or darker decreased exposure. First set the This is called Auto Exposure Bracketing AEB. After locking the exposure, you can recompose the shot while maintaining the desired exposure level. This feature is useful for backlit and spotlighted subjects. This method is called bulb exposure. Under the menu's For details on using the EX-series Speedlite, refer to the Speedlite's instruction manual. The EOS 1Ds Mark II is a Type A camera compatible with all EX-series Speedlites providing the features below. You can even add a sound recording to an image. If the vertical image is taken while the camera is pointed up or down, the image might not rotate automatically for playback. This will display the highlight alert on the shooting information and single image displays. The horizontal axis indicates the brightness level darker on the left and brighter on the right, while the vertical axis indicates how many pixels Dark image exist for each brightness level.

Images will then be displayed in the correct orientation during playback. If you hold down the Or you can cancel the image protection all at once. Protected images cannot be erased with the camera's Erase function. Make sure you no longer need the image before erasing it. Then it might work with the camera. Use another memory card instead. Or, if you have a memory card reader commercially available that can read the card, use it to transfer the images to a personal computer. The operation method is the same as selecting and setting menu settings. For details, refer to your printer's instruction manual. Default With a Canon printer, the print will be borderless. The printing style settings will be displayed. The image will also be cut off along all four edges. The printing style settings will be displayed. Do the trimming before printing. If you set the trimming and then set the print settings, you may have to set the trimming again. It is for images taken with a digital camera, and you can specify which photos and the quantity to print. To return to single image display, set the camera for standard image display. One standard type print will be ordered for all the images. Note that after following the "Selecting Individual Images" procedure, if you do the "Selecting All Images". If you specify more than this, all the selected images might not be printed. The Print Order screen will appear. With both C.Fn071 and C.Fn072, manual focusing is possible with the lens focus mode switch set to You can also change the white balance bracketing sequence. When "Auto



With DC Coupler Kit DCKE1, you can connect the camera to a Page 23 Mounting and Detaching a Lens Mounting and Detaching a Lens. Mounting a Lens The camera can use both a CF card and SD card. There must be. Page 25 the switch to. Page 26 The access lamp lights or blinks while the picture is taken, when Page 27 power switch Basic Operation. Power Switch. The camera can operate only after the switch is turned on. The shutter button has two stages. You can press the shutter button Page 29 Using the Dial. The dial is mainly used for shooting related settings. There are Page 30 Using the Dial. The dial is used for AF point selection and selecting the desired For vertical shooting, the vertical grip camera bottom has a shutter Page 32 Menu Operations Menu Operations. By setting various optional settings with the menus, you can set. Page 33 Menu Setting Procedure Page 34 5 Exit the menu. Menu Settings Page 36 default settings About the LCD Monitor Page 40 sensor cleaning 3 Cleaning the CMOS sensor. The CMOS sensor is like the lm in a lm camera. If any dust or other. Page 41 4 Press the shutter button You can select the image size recorded pixels and JPEG quality Page 45 maximum burst About the RAW Format. The RAW format assumes that the image will be processed by a Page 47 ISO speed extension Setting the ISO Speed. The ISO speed is a numeric indication of the sensitivity to light. A higher. ISO speed. Page 48 white balance 3 Selecting the White Balance. Normally, the setting will set the optimum white balance Page 49 custom white balance 3 Custom White Balance. With custom white balance, you shoot a white object that will serve as Page 51 color temperature Setting the Color Temperature. You can numerically set the white balance's color temperature. You can correct the standard color temperature for the white balance Page 53 white balance bracketing White Balance Auto Bracketing. With just one shot, three images having a different color tone can be Page 55 color matrix 3 Selecting the Color Matrix.

<http://fogerindo.com/images/brother-pocketjet-3-plus-manual.pdf>



The color matrix enables you to select the preferred color shade, colorPage 56 color tone Creating Custom Color Matrix SettingsPage 58 processing parameters 3Setting the Processing Parameters. The image you capture can be processed automatically by the cameraPage 59 4 Select the item to be set. Page 60 folder creation Setting the Folder and Memory Card. You can create and select folders. When using both a CF card and SD. Page 61 memory card selecting A folder cannot be created beyond folder No. 999. Page 62 backup Using Both Memory Cards for Image Recording Backup. The image is recorded with the same le No., pixel count, and. Page 63 le numbering 3File Numbering Methods. The le number is like the frame number on lm. There are two le. Page 64 Continuous Numbering. The le numbering continues in sequence even after you replace thePage 65 Autofocus andThe Area AF ellipse has 45 AFTo focus a peripheral subject not covered by the Area AF ellipse, followAutomatic selection. From among the 45 AF points, the camera selects the AF pointBy registering the AF point you often use, you can switch to it instantly. Page 71 Switching to the Registered AF Point. Normally, you press the button and button simultaneouslyC.Fn17 can be set to expand the AF point's activation area to includeThe EOS1Ds Mark II's AF points are all horizontalline sensitive. However, bright lenses with. Page 74 3 With the following Lseries lenses whosePage 75 manual focusing When Autofocus Fails Manual Focusing. Autofocus can fail to achieve focus the focus conrmtion light Page 76 Manual FocusingPage 78 selftimer Selftimer OperationPage 79 Exposure ControlPage 80 metering mode qSelecting a Metering ModePage 81 e Centerweighted AveragedWith multiple spot meter readings, you can see the relative exposurePage 83 You can take up to eight spot meter readings for one picture.

If you pressIf "30" and the maximum aperture blink, it indicatesIn this mode, you set the shutter speed and the camera automaticallyPage 87 If the maximum aperture blinks, it indicatesPage 88 Av Aperturepriority AE fAperturePriority AE. In this mode, you set the desired aperture and the camera sets thePage 89 depth of eld 4 CheckPage 90 M Manual exposure aManual Exposure. In this mode, you set both the shutter speed and aperture value asPage 91 Exposure level indicatorExposure compensation is used to alter the camera's standardPage 93 AEB hAuto Exposure BracketingPage 94 AEB with the ISO Speed. Set the ISO speed that is to be the standard AEB exposure. ForAE lock enables you to lock the exposure at a different place from theWhen bulb is set, the shutter stays open while you hold down theThis method. Page 97 mirror lockup Mirror Lockup. Mirror lockup is enabled with C.Fn12. p.151 This prevents mirrorPage 98 ash Flash Photography. With EXseries Speedlites. An EOSdedicated, EXseries Speedlite makes ash photography asPage 100 NonCanon

Flash Units. Sync Speed. The EOS1Ds Mark II can synchronize with compact, non-Canon flash. You can see the image on the LCD monitor immediately after you take a picture. You can change the number of seconds the image is displayed on the LCD monitor after being taken. Page 104 auto rotate 3 Auto Image Rotation. Vertical shots can be rotated automatically so that they are displayed horizontally. Auto rotate will. Page 105 playback Image Playback. You can select any image to view. You can view a single image, the Page 106 single image display Changing the Image Display Format Page 107 shooting information Shooting Information Display This histogram is a magnified view Magnified View. You can magnify the image by 1.5x to 10x on the LCD monitor. Page 110 Rotating an Image 3 Rotating an Image. You can rotate an image by 90°. TV system. Page 112 protect J Image Protection. Protecting a Single Image. This prevents the image from being erased accidentally.

<https://stellabakingcompany.com/wp-content/plugins/formcraft/file-upload/server/content/files/16270c1b8b8095---bottom-line-fish-finder-manual.pdf>

Page 113 3 Protecting All Images in a Folder or Card. You can protect all the images in the selected folder p.61 or. Page 114 sound recording K Sound Recording for an Image. You can record and add sound to any image. The sound data is stored in the image file. You can erase a single image with the button, erase all images in a folder. If "Card Err" is displayed on the LCD panel, it indicates a problem with the card. Page 122 Preparing to Print. You do the direct printing procedure entirely through your camera. The operation method is the. Page 123 Printers and Cables A. Page 124 If you use a battery to power the camera, make sure it is fully charged. Page 125 PictBridge w Printing with PictBridge. Depending on your printer, certain settings might be different or. For details, refer. Page 126 T Setting the Paper Size Y Setting the Paper Type. Page 127 About Page Layout. Bordered The print will have a white border along the edges. Page 128 Depending on the image's size and recording quality, it may take some time. Page 129 CP Direct A Printing with CP Direct Page 130 4 Set the options. Page 131 6 Print the image. Page 135 trimming Setting the Trimming. You can trim the image and print only the trimmed portion. Do the trimming before printing. If. Page 136 Image area to be printed Page 137 print order DPOF Digital Print With DPOF Digital Print Order Format, you can. Page 138 Print Order. Print settings. Set the print type, date imprinting, and le No. imprinting. The print. Page 143 Direct Printing with DPOF. With a printer compatible with direct printing, you can easily print Custom Functions enable you to customize various C.Fn03 is unused. You can change the AEB sequence when you bracket with the shutter. Page 151 C.Fn12 Mirror lockup Safety shift can be set for the shutter priority AE and aperture priority. AE modes. You can register up to three groups of Custom Function settings. A Page 156 5 Register or apply. Beyond Custom Functions, Personal Functions enable you to further They are set with the. Page 158 3 Clearing and Resetting Personal Functions.

You can clear or reset Personal Functions that have been set and You can save the shooting mode, menu settings, Custom Function Page 160 Reading camera settings If there is a problem, refer to this Troubleshooting Guide. Power Source. The battery cannot be recharged. Page 163 The camera turns off by itself. Page 164 The image is out of focus. If a camera error occurs, will be displayed on the top LCD Page 166 focusing screen Changing the Focusing Screen. You can change the camera's focusing screen to better suit the subject. Rated voltage of Page 169 Remote Switch RS80N3. This is a remote switch with an 80 cm cord to prevent Page 170 system map System Map Recording medium Type I or II CF card, SD memory card. Image size. Page 173 Interface IEEE1394 for personal computers Settings Auto, daylight, shade, cloudy. Focusing modes OneShot AF ONE SHOT Self timer 10sec. or 2sec. delay. Remote control Remote control with N3 type terminal. Recording method The voice annotation recorded with the builtin File format. Page 177 Digital Camera Model DS126081. This device complies with Part 15 of the FCC Rules. Operation is subject to the following conditions: 1. This device must not cause harmful interference. 2. If interference is caused by this device, you must stop using the device immediately. Page 178 Adobe RGB. 55 CP Direct. 129. AE lock. 95 Bubble Jet. Page 179 LCD panel. 13 R. LCD panel illumination. 96 RAW. 44, 45 Page 180 CANON INC. 302, Shimomaruko 3-chome, Ohtaku, Tokyo 1468501, Japan. Note Please use Adobe Reader 6.0 or later versions to browse the PDF file. You may download and use the Content

solely for your personal, noncommercial use and at your own risks. Canon shall not be held liable for any damages whatsoever in connection with the Content, including, without limitation, indirect, consequential, exemplary or incidental damages. You shall also not and shall not let others reproduce, modify, reformat or create derivative works from the Content, in whole or in part. And by having access to our ebooks online or by storing it on your computer, you have convenient answers with Canon 1ds Mkii Manual.

To get started finding Canon 1ds Mkii Manual, you are right to find our website which has a comprehensive collection of manuals listed. Our library is the biggest of these that have literally hundreds of thousands of different products represented. I get my most wanted eBook Many thanks If there is a survey it only takes 5 minutes, try any survey which works for you. This manual is for the EOS1Ds Mark III installed with firmware Version 2.0.0 or later. Upon completion of the download, the PDF file opens automatically. You may download and use the Content solely for your personal, noncommercial use and at your own risks. This page requires Javascript. Modify your browsers settings to allow Javascript to execute. See your browsers documentation for specific instructions. To install your download click on the name of the downloaded file. Tough, highdurability body and shutter designs, combined with the unique EOS Integrated Cleaning System, set new standards for professional dependability. Cuttingedge features such as a large 3.0inch LCD monitor with Live View Function, and a fast, precise 45point AF system make the EOS1Ds Mark III powerful and versatile. And, of course, the EOS1Ds Mark III is part of the unparalleled EOS System, which, with more than 50 EF lenses, 15 interchangeable focusing screens, and extensive wireless remote control and lighting accessories, is the most advanced and powerful digital photography system in the world. The recording area of the sensor is 36 x 24mm, which is equivalent to the fullframe size of the 35mm film format. Recommended exposure index. Highlight Tone Priority expands the available range of capture in the highlights, yet it exacts no penalties in either shadow detail or other aspects of image capture. RAW images are recorded at the full 14 bit, and once processed will preserve the entire range of tones when opened in Photoshops 16bit color space. If RAW images are processed in Canons Digital Photo Professional software v. 3.

2 or higher or RAW Image Task software, the versatile Picture Style settings can be modified or completely changed in the computer, without affecting the original file. The entire electronic system is totally redesigned, giving the camera its incredible combination of speed and image quality. Digital noise is significantly reduced in shadow areas, and color reproduction is superior. When the Live View Function is enabled, the reflex mirror is locked up and the shutter opens. The image output from the CMOS sensor will be displayed in real time on the LCD monitor with 100 percent coverage. A selectable portion of the image can be magnified by 5x or 10x to aid in precise manual focusing. Focus, exposure check, composing, and shooting can all be accomplished in this mode. There is also a grid overlay option, perfect for architectural photography. The image can also be displayed on a TV monitor, which is ideal for showing photographs, as they are being composed, to clients and portrait subjects. The big, clear image is ideal for Live View Function. It also makes it easier than ever to confirm capture, check memory card contents, confirm shooting parameters, and access menu options. The camera can even be fired remotely from the computer. Connection between the camera and computer can be done via USB cable or, with the optional WFTE2A Wireless Transmitter, via wireless LAN or an Ethernet connection. Rubber gaskets are used at nearly every joint and seam including around the battery compartment cover, memory card door, and flash shoe to keep out moisture and dust. Dust that settles on the lowpass filter is removed using ultrasonic vibration. This Self Cleaning Sensor Unit is automatically activated whenever the camera is powered on or off. It can also be manually activated. A special collar positioned around the sensor collects the loosened dust. Dust particles can also be automatically removed via software.

This data is transmitted along with the image, whether JPEG or RAW, and can be either manually or

automatically erased in Canons DPP software. This added software option ensures the cleanest possible image, perfect for printing or archiving. This data is transmitted along with the image, whether JPEG or RAW, and can be either manually or automatically erased in Canons DPP software. This added software option ensures the cleanest possible image, perfect for printing or archiving. Thanks to unparalleled Canon highspeed data management technologies including the use of dual DIGIC III processor chips the EOS1Ds Mark III delivers fullresolution performance without sacrificing allimportant shooting speed or camera responsiveness. Maximum continuous shooting is 5 fps, and up to 56 consecutive fullresolution JPEG or 12 RAW images can be captured in a single continuous burst at shooting speeds up to the full 5 fps. UDMAcompliant CF cards offer twice the data transfer rate of conventional cards, further enhancing the shooting and postshooting performance of the EOS1Ds Mark III. The extraordinary 45point highdensity area AF system provides not only the industrys largest continuous AF coverage area, but also the greatest range of control over focusing point selection. The focusing point can be selected automatically by the camera based on highspeed microcomputer analysis of image content, or users can manually select any of the 19 high precision crosstype AF points, which can be complemented by 26 additional Assist Points for fast, accurate focusing. The OneShot AF mode is ideal for more static subjects. The camera rapidly selects the optimum focusing point, and the subject is instantly brought into focus even if it is offcenter. The AI Servo AF mode is excellent for moving subjects. Aided by a the cameras outstanding new AF sensor and powerful processing abilities, it precisely tracks subject movement, even when shooting continuously at 5 fps.

Even with erratic or rapid subject movement, the photographer can concentrate solely on image composition. It integrates elegantly with the EOS1Ds Mark III, is powered by the camera body, and is as durable and weatherresistant as the camera itself. Not only can the cameras files be sent to a compatible computer in three different wireless modes, but you can even remotecontrol the camera, wirelessly, from your computer. Images shot on the camera can be recorded directly to the hard drive. The WFTE2A can also communicate with various thirdparty GPS devices connected via USB. Location coordinates, precise Universal Time Code, and altitude can be sent to the camera and added to each images original shooting data. With a large, highperformance external antenna connected to a wireless LAN access point receiver. Wireless distance range is dependent upon environmental conditions and other radio interference. Background blur appears more natural, and graininess and flare are reduced. At the same time, the finder is brighter, especially at the edges and corners. As with all EOS1 Series SLRs, the EOS1Ds Mark III gives a photographer the widest choice of interchangeable focusing screens. Currently, there are 15 different Ecseries screens. Canon lenses employ advanced optical expertise and micronprecision engineering to deliver unprecedented performance in all facets of the photographic process. Special optical technologies, such as aspherical optics and fluorite elements are featured in the universally acclaimed L Series lenses. Unlike a fisheye lens, this stunning new ultrawide lens is totally corrected for linear distortion, and offers even better sharpness and contrast than its predecessor. Through Canon lenses, photographers can truly maximize the quality and liberating performance of the EOS1Ds Mark III. With any of the flashes in the EX Speedlite line, ETTL II provides reliable flash output whether shooting fillin flash pictures in sunlight, or using flash in total darkness.

The cameras new 63zone evaluative metering sensor is also used for flash metering giving even finer metering command of the image area. If you prefer a broader area for flash metering, Custom Function II41 allows shifting flash metering so that all 63 zones of the sensor are used equally to calculate flash exposures. Other new features include a PC socket on the flash unit, and an external metering sensor for nonTTL auto flash if desired. With the EOS1Ds Mark III, you can set most flash settings directly from the cameras menus. It includes an AFassist Beam, which works in conjunction with the EOS1Ds Mark IIIs focusing system, and automatically sends color temperature information to the camera when the flash fires, for more accurate white balance rendition with flash

photography. Each application is designed to perfect captured images and streamline the digital workflow. ZoomBrowser EX v. 5.8 and Digital Photo Professional v. 3.0 for Windows are compatible with the new Windows Vista operating system, too. Because its CMS Color Management System compatible, Digital Photo Professional allows for easy image layout and printing in Adobe RGB in conjunction with EasyPhotoPrint and PictBridge printers. It also features the Dust Delete Data Detection tool for cleaner images. Furthermore, it's used to upload settings back into a USB-connected camera. Both allow viewing of numerous types of images including finished TIFF and BMP files. Both also have a variety of search options for finding images, allow renaming of single images or batches of files, and offer a variety of options for printing without using a separate image editing program. Scroll down to easily select items to add to your shopping cart for a faster, easier checkout. Visit the Canon Online Store Adapter EcC, EdC Designed for use in warm and humid or cold weather when fogging is most likely to occur, and attaches easily to reduce condensation and help you maintain a clear view of your subject.

<https://labroclub.ru/blog/4-speed-manual-transmission-advantages>