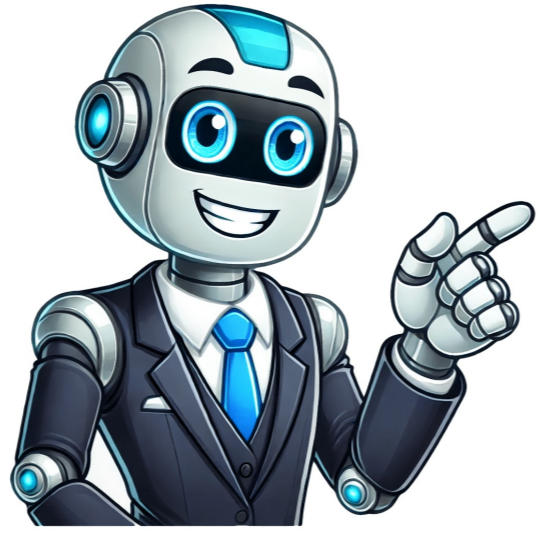


I'm human



C scott driver park boat ramp

Three public boat ramps are described, each with unique features and accessibility information. The first ramp, located at Hoover Dike Road City Ramp, has medium accessibility and is ADA compliant, with two single lanes and 22 parking spaces for vehicles with trailers. It also has flush toilets and picnic tables. The second ramp, John Stretch Memorial Park Public Boat Ramp, is located on the South Rim Canal of Lake Okeechobee and requires vehicles to drive up and over the Herbert Hoover Dike, making it suitable only for smaller boats. This ramp has a good to excellent condition, one double lane, and 30 parking spaces. The third ramp, Paul Rardin Park Public Boat Ramp, is also located on Lake Okeechobee and has a good to excellent condition, one double lane, and eight parking spaces for vehicles with trailers. All three ramps are government-owned and open to the general public, with varying hours of operation and amenities such as running water, picnic tables, and grills. Contact information is provided for each ramp, including phone numbers and email addresses. The GPS coordinates for each location are also listed, allowing users to easily find directions using Google Maps. A database entry lists several boat ramps across different locations. Each ramp has various features and conditions. The Taylor Creek Boat Ramp, located at Hwy 98/441, is owned by the South Florida Water Management District. It has a poured-in-place concrete construction with good to excellent condition but needs repair as of November 2015. The ramp can accommodate one single lane and has limited parking spaces for vehicles with trailers. Toilets are not available, and disabled access is also non-existent. The Glades RV Resort and Marina, situated near the Caloosahatchee Canal in Glades County, features a poured-in-place concrete ramp that requires repair as of November 2015. The ramp has one single lane and good parking conditions but lacks information on its operational hours and fees. However, amenities such as showers, running water, and picnic tables are available. Another boat ramp is located near the Caloosahatchee Canal in Glades County and managed by the City of Belle Glade. This ramp boasts a poured-in-place concrete construction with good to excellent conditions. It features two single lanes and six total lanes, as well as ample parking for vehicles with trailers. Toilets are available but not specifically marked as ADA compliant. Lastly, Uncle Joe's Motel and Campground in Lake Okeechobee - Mayaka Cut has a stand-alone ramp with poured construction. The ramp's condition is unknown, and operational hours and fees are also unclear. The Scott Driver Recreation Area offers direct access to the Kissimmee River and serves as a crucial trailhead for the Florida Trail along Lake Okeechobee. This recreation area is predominantly used by boaters and paddlers, but it has more to offer beyond its launch point. Located on the eastern shore of the Kissimmee River just north of SR 78 bridge, Scott Driver Recreation Area is easily accessible from US 441 and SR 78 in Okeechobee. The area is open 24/7 and allows leashed dogs, but camping is not permitted. Visitors can park near the boat ramp and access restrooms. Beyond its main function as a boating launch point, Scott Driver Recreation Area has been found to be an excellent spot for birdwatching. Two prime hotspots for birders are located along the northbound Florida Trail and one along the Kissimmee River. Watching limpkins, great egrets, ibises, snowy egrets, cattle egrets, little blue herons, and wood storks congregate in a small marsh near where the trail meets a gate across the levee. The area also provides an opportunity to hike the Florida Trail, which goes north from this point along the levee towards Platts Bluff, another county park. The paved path that arcs 3.8 miles to Okeechobee Recreation Area in Okeechobee (now known as Cliff J. Betts Recreation Area) is also accessible via the trail and continues southeast around the lake to Clewiston. Scott Driver Recreation Area's location makes it an important stop for those exploring the region, offering a mix of outdoor activities and scenic views along the Kissimmee River and Lake Okeechobee. Scott Driver Recreation Area serves as a primary access point for the Florida Trail loop around Lake Okeechobee. To reach Buckhead Ridge and Indian Prairie, hikers must navigate across the highway 78 bridge over the Kissimmee River, adding some discomfort due to lack of pedestrian separation from traffic. The trail stretches for more than 112 miles, covering a significant portion of Lake Okeechobee's shoreline. Locals and visitors alike can enjoy a leisurely half-mile loop around Scott Driver Recreation Area by following the boat basin canal leading out to the Kissimmee River. A chain link fence separates the area from the riverfront, but hikers can take advantage of two gaps in the fence to explore beneath ancient cypress trees along the water's edge. The waterfront at Scott Driver is renowned for its abundant birdlife, including limpkins, wood storks, and ibis. For those interested in boating or paddling, the area offers 24-hour access to the boat basin, as well as ample parking space for trailers. North of this point by water, Paradise Run and the S-65E Impoundment provide excellent opportunities for paddling and fishing. South of Scott Driver Recreation Area, the Kissimmee River flows under the SR 78 bridge, passing through Okee-Tantie Recreation Area before emptying into Lake Okeechobee. Nature enthusiasts can explore nearby areas such as the Florida Trail connector from Lake Okeechobee to natural lands north of Okeechobee, Taylor Creek STA with its ancient shoreline and man-made marshes, or the Okee-Tantie Recreation Area where the Kissimmee River pours into Lake Okeechobee.

Scott driver park. Scott driver. Drive scott.