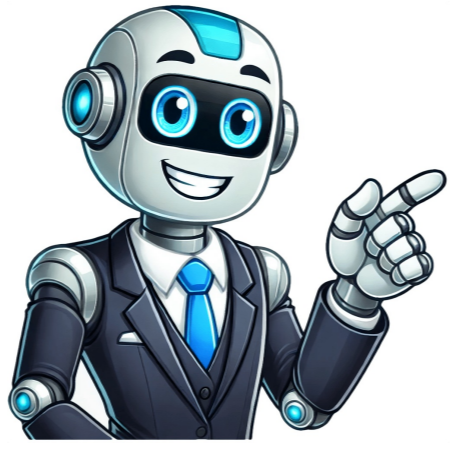


I'm not a bot



To get results from Google each time you search, you can make Google your default search engine. Set Google as your default on your browser If your browser isnt listed below, check its help resources for info about changing search settings. Google Chrome Open Google Chrome. In the top right, click More Settings. Or, in your address bar, enter chrome://settings. Tip: If there's a Chrome update available, in the top right, you'll find Update . Click Update Settings. Under "Search engine,"selectGoogle. Open the Chrome app . In the top right, tapMore Settings. Under "Basics," tapSearch engineGoogle. Open the Chrome app . Tap More Settings . Tap Search engineGoogle. Microsoft Edge Open Microsoft Edge. At the top right, click Settings and more Settings. On the left, click Privacy, search, and services. Scroll to "Services." Click Address bar and search. In the "Search engine used in address bar" drop-down, click Google. In the "Search on new tabs uses search box or address bar" drop-down, click Address bar. Internet Explorer 8 & higher Tip: To find which version of Internet Explorer you're using, click Help About Internet Explorer. Internet Explorer 11 Open Internet Explorer. At the top right, click the gear icon. Click Manage add-ons. At the bottom, click Find more toolbars and extensions. Scroll down to the Google Search extension. Click Add. To confirm, click Add again. At the top right, click the gear icon. Click Manage add-ons. On the left, under "Add-on Types," click Search Providers. On the right, click Google Search. At the bottom, click Set as default. Internet Explorer 10 Open Internet Explorer. In the top right corner of the page, click the gear icon. Click Manage add-ons. On the left side of the page, click Search Providers. In the bottom left corner, click Find more providers. Select Google. Click Add to Internet Explorer. Check the box next to "Make this my default search provider." Click Add. Internet Explorer 9 Open Internet Explorer. In the top right corner of the browser, click the Tools icon. Click Internet options. In the General tab, find the "Search" section and click Settings. Select Google. Click Set as default. Click Close. Internet Explorer 8 Open Internet Explorer. In the top right corner of your browser, click the down arrow in the search box. Click Find More Providers. Click Google. Check the box next to "Make this my default search provider." Click Manage Search Providers. Click Add. Firefox Open Firefox. In the small search bar in the top right of your browser, click Search. Click Change Search Settings. Under "Default Search Engine," select Google. Safari Open Safari. Click the search bar. In the left corner of the search bar, click the magnifying glass. Select Google. Android browser Open your browser app. It could be called Internet or Browser. Tap the Menu button on your phone or at the top right of the browser. Tap Settings Advanced Set search engine. Tap Google. Search widget Important: This feature is available on new devices distributed in the European Economic Area (EEA) on or after March 1, 2020. On your Android phone or tablet, open the Google app . At the top right, tap your Profile picture or initial Settings. Tap Search widget Switch to Google. Tip: Learn how to set Google as your homepage. Post to the help community Get answers from community members Asked By Aabel Maverick 30 points N/A Posted on - 03/05/2015 how to make MSN home page MSN is a fun site as I want it as my homepage its contain hardly info which is customize preference & needs there are also some frequently links and news we get every day you would expose or fresh web content as a regular basis with MSN as your homepage. How do I set this as homepage? Status: Open Question Views: 5702 Answer Count: 3 Vote Up 0 Vote Down Answer Accepted: No Question Category: Google Chrome Answered By Kanet Ghanbri 0 points N/A #146307 Yes, you can make MSN your home page as you can make any website as your home page. But it need to be configured to stay at the home page.Please follow the whole procedure step by step. Open internet and open MSN site Click tools Choose inter option Locate general page finds homepage option Highlight the current home page with your mouse and drag mouse Tick delete key on your keyboard to get rid of the current page Type new home page by using the keyboard Tick ok & save new home page Click home now sees MSN will be your home page. And your problem will be solved. Answered By George Hathman 0 points N/A #200315 To set MSN as your home page on Google chrome, simply open the chrome browser, on the far right corner click menu>settings>select appearance>select change home page>enter www.msn.com Click on the home page icon a the top right of your chrome browse to confirm is your homepage has changed to MSN. Answered By Sharath Reddy 590495 points N/A #307979 MSN is the default home page for the Microsoft Internet Explorer web browser. If you are using a different web browser, it will also have a different default home page. If you want to use MSN as your default home page, it shouldnt be a problem and can be done in any browser you are using. In Google Chrome, there is no home page shown.It just displays a new tab on startup with the Google logo, search bar, and a couple of thumbnails. To set a new home page for Google Chrome, in Google Chrome, click the Menu button on the upper right corner of the screen to display the dropdown menu then select Settings. Another way is to type without quotes chrome://settings in the address bar and hit Enter.In the Settings tab, under On startup section, select Open a specific page or set of pages then click Set pages.Google Chrome click Set pagesIn the dialog, type without quotes click OK and thats it.Google Chrome enter home page addressYou now have MSN as your default home page in Google Chrome. You can quickly get to Google every time you open your browser by making Google your homepage. Change your homepage Choose a browser below, then follow thesteps on your computer.If you don't see your browser below, go to the "Help" section of your browser and look for information on how to change your browsers homepage. Firefox Open your browser and visit www.google.com. Dragthetab to the Home button, thenrelease. Click Yes. Google Chrome In the top right corner of your computer's browser, click More Settings. Under "Appearance,"turn onShow home button. Select your current homepage or Enter custom web address. Then, enter: www.google.com. Safari In the top left corner of your screen, select Safari PreferencesGeneral. Next to "New windows open with" and "New tabs open with,"selectHomepage. Next to Homepage,"enter: www.google.com. Internet Explorer In the menu bar on the top of your browser,click Tools. Select Internet Options. Click the General tab. Under "Home page," enter: www.google.com. Click OK. Restart your browser. Microsoft Edge In the upper right corner of your browser, select More Settings. Under "Set your homepage," click the Down arrowA specific page or pages. If you have a current homepage. Next to the URL, click X. Click "Enter a URL". Then, type:www.google.com. Google is stuck as my homepage Google won'tchange your homepage settings without your permission. Reset your homepage. Choosea browser above, then follow the steps to replace Google with the site you want as your homepage. Check for unwanted programs. If resetting your homepage doesn't fix the problem, you might have unwanted programscalledmalware that's imitating the Google site. Learn about malware and how to remove it. Post to the help community Get answers from community members

How to set chrome start page. How to set msn as my homepage on chrome. How to set home page chrome. How to set homepage in bing. How to set msn as homepage on google chrome. How to make msn my homepage on google chrome. How to set msn as homepage.