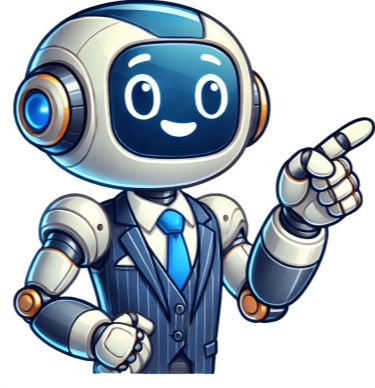


Continue



100%(1)100% found this document useful (1 vote)368 viewsThis document is a capitalization and punctuation worksheet that provides examples of different punctuation marks such as periods, exclamation points, question marks, commas, apostrophes, an...Al-enhanced title and descriptionSaveSave Capitalization-Punctuation-Marks-1 For Later100%100% found this document useful, undefined100%(1)100% found this document useful (1 vote)368 viewsThis document is a capitalization and punctuation worksheet that provides examples of different punctuation marks such as periods, exclamation points, question marks, commas, apostrophes, an...Al-enhanced title and description Basic rules of capitalization and punctuation are given below. Proper nouns (e.g. James, India, Egypt, Ganga and Everest) always begin with capital letters. A capital letter is used at the beginning of a sentence. A statement and an imperative sentence end with a full stop, where as an interrogative sentence ends with a question mark and an exclamatory sentence ends with an exclamation mark. Rewrite the following sentences using appropriate punctuation marks and capital letters wherever necessary. 1. river yamuna flows through agra 2. eiffel tower is the most famous monument in france 3. my brother is a singer 4. where have you been all this while 5. you look hot are you ill 6. come here at once 7. rohan is a smart boy 8. sania couldn't believe her eyes when she saw the bicycle 9. india is the seventh largest country in the world 10. mumbai is the capital of maharashtra 11. my best friend and his family are moving to chennai 12. you dont look happy to see me do you 13. you shouldn't have done this to john 14. there is a large rain forest in south america Answers 1. River Yamuna flows through Agra. 2. Eiffel Tower is the most famous monument in France. 3. My brother is a singer. 4. Where have you been all this while? 5. You look hot. Are you ill? 6. Come here at once. 7. Rohan is a smart boy. 8. Sania couldn't believe her eyes when she saw the bicycle. 9. India is the seventh largest country in the world. 10. Mumbai is the capital of Maharashtra. 11. My best friend and his family are moving to Chennai. 12. You don't look happy to see me, do you? 13. You shouldn't have done this to John. 14. There is a large rain forest in South America. About this Worksheet: This punctuation worksheet directs the student to re-write each sentence and capitalize and add the correct punctuation marks where needed. This punctuation worksheet gives the student practice with both capitalization and punctuation. The student will need to capitalize the start of the sentences provided. They will also have to choose from a comma, apostrophe, quotation mark, question mark, exclamation mark and period. This worksheet is suitable for 6th Grade, 7th Grade and 8th Grade. "Do you need engaging and differentiated interactive activities for grammar practice on punctuation? This set of 33 activity worksheets is a great way to help your students focus on capitalization and punctuation skills, such as periods, question marks, exclamation marks, quotation marks, commas, and apostrophe marks. This unit includes short, kid-friendly graphics to teach the correct use of punctuation in a variety of formats. These activities are suitable for learning from the beginning and for extra practice, with tasks that are easy, fun, and challenging. Students can cut and paste to match, add, rewrite sentences/passages, and write their sentences. The easy-to-grade worksheets are ideal for reinforcement, morning work, or even homework. Engaging reading passages allow students to identify correct punctuation in context." Some tasks included are: Add the correct punctuation point to each sentence. Cut and paste the sentences and glue them in the right places. Cut and paste the correct punctuation mark. Circle the mistake and rewrite the sentence. Insert punctuation to fix the story/sentences. Rewrite the sentence with the correct punctuation. Rewrite the passage with the correct punctuation. Color the correct punctuation mark for each sentence. Write sentences for each picture that match the punctuation. All the activities in this packet are intentionally designed to be very simple, engaging, and easy for students to understand. There is no prep required - just print and go. Please download the preview to see everything that is included. Creative Commons "Sharealike"Select overall rating(no rating)Your rating is required to reflect your happiness.Write a reviewUpdate existing reviewIt's good to leave some feedback.Something went wrong, please try again later.This resource hasn't been reviewed yetTo ensure quality for our reviews, only customers who have downloaded this resource can review it Every sentence ends with a punctuation mark. Use a period (.) at the end of a statement. Use a question mark (?) when you ask a question. Read each sentence. Add commas where necessary. Write a sentence in which a series of three adjectives modifies a noun. See if you can choose the correct form of punctuation needed at each stage. Add punctuation to each sentence as needed. Make sure to carefully examine each sentence. An appositive is a phrase that provides clarifying information about a noun. A pair of commas separate the appositive from the rest of the sentence. The appositive can be removed, and the sentence still makes sense. Read each sentence below. Does it use the correct punctuation? Write correct or incorrect on the line. Then, rewrite the incorrect sentences on the back of this page, using the correct punctuation. This will help you see where you are at with your punctuation skills, at the sentence level. If you do well here consider working at the paragraph level. Put a check mark in front of the sentence that uses commas correctly. You may need to double check your work once you place them. Read each sentence below. If it is a question, put a question mark (?) on the line. If it is a statement, put a period (.) on the line. Apostrophes are used to show that letters have been left out of certain words. With an apostrophe, you can turn two words into one. Brackets, also known as parentheses, provides information that is additional to the sentence. An ellipsis is a series of three dots (. . .) which shows that some text has been left out. Use the ellipsis to shorten a long quotation. The text that is omitted doesn't change the meaning of the quotation, and the reader can still understand the quotation without it. Dashes indicate a change in direction in a sentence. They are stronger than a comma, but not as strong as a period. An exclamation point takes the place of a period at the end of a sentence. It signals strong feeling, excitement, or command. A run-on sentence is two or more complete sentences that are punctuated as one long sentence. The worksheets located on this page basically cover just about every commonly used punctuation mark there is. If you are looking for materials on specific forms of punctuation, we also have work on using commas, quotations marks, and proper capitalization. These can be very helpful as you learn to proofread your own work and that of others. I always recommend that you read the words aloud when you are editing it brings it to life more and can help you spot mistakes quicker. If you can find one that we miss, please let us know and we'll put those together for you. What are the Rules of Punctuation? Punctuation marks are like traffic signals for writing. They tell the reader when to pause, when to speed up, and when to stop. In other words, they help control the flow of reading. Without punctuation marks, writing would be chaotic and hard to follow. With them, however, writing can be smooth and coherent. That's why punctuation is important! Here are some of the common rules of punctuation: 1. Commas " , " 1. Use a comma to separate items in a series. E.g., I have three sisters, two brothers, and a cat. 2. Use a comma after an introductory word or phrase. E.g., In the morning, I like to eat breakfast cereal. 3. Use a comma to separate clauses in a compound sentence. E.g., She likes to read books, but she also likes to watch movies. 4. Use a comma to separate independent clauses if coordinating conjunction does not join them. E.g., I am doing laundry tonight, and I need laundry detergent. 5. Use a comma before a coordinating conjunction (and, but, or, for, nor) to join two independent clauses. E.g., I have a headache, so I will take some aspirin. 6. Use a comma after a closing quotation mark when the quoted material is a complete sentence. E.g., "I am feeling stressed out," she said. 7. Use a comma to set off a nonessential clause or phrase. E.g., The book, which I just read, was really good. 8. Use commas to set off interrupting words and phrases, such as however, still, nevertheless, yes, indeed, certainly, well, actually, of course. E.g., She likes to exercise regularly. However, she finds it hard to get motivated sometimes. 9. Use commas to set off appositives. E.g., My friend Paul, who is a musician, is coming over later today. 2.Period /Full Stops "." A full stop (.) is a punctuation mark used to indicate the end of a sentence. It is also called a period. The rules for using a full stop are: 1. Use it after a sentence fragment. A sentence fragment is a group of words that are not complete sentences. For example, I wanted to go. 2. Use it after the salutation in a letter. A salutation is the opening line in a letter, such as "Dear Mrs. Smith." 3. Use it when writing abbreviated dates such as Jan., Feb., etc. For example, on Nov. 3, 2017. 4. Use it after titles and honorifics before someone's name, unless the title ends with Mr or Ms. For example, Dr. Smith or Professor Jones, but Mr. Smith or Ms. Jones. 5. Use it at the end of a declarative sentence and imperative sentence. A declarative sentence is a statement or a command, whereas An imperative sentence gives a command or makes a request. For example, The meeting is at 2 p.m. 6. Use it at the end of a sentence if there are quotation marks around the sentence. For example: "We had such a good time," she said happily. 3. Question Marks "?" 1. Use a question mark at the end of a sentence that is asking a question. E.g., Are you feeling better today? 2. Use a question mark in place of a period when indicating an interrogative sentence. E.g., Do you like dogs or cats? 3. Do not use a question mark after an indirect question. E.g., I wonder if he is ever going to call me? 4. Semicolon ";" The rules of semicolons with examples are as follows: 1. Use a semicolon to connect two independent clauses related to each other. For example, I love spending time with my family; they are the best people in the world. 2. Use a semicolon to separate two main clauses joined by conjunctive adverbs like however or in addition. For example: She tried her best to finish the project on time; however, she failed. 3. Do not use a semicolon before the word because it is followed by an independent clause as this is already a complete sentence. For example: Do not write. She didn't study for the test, because she was too busy. Ending Note Punctuation is an essential part of writing, and it helps to clarify the meaning of a sentence. There are specific rules for using different types of punctuation marks, such as commas, semicolons, and full stops. It is essential to understand how to use these marks to produce clear, concise sentences that are easy to read. An apostrophe is a versatile punctuation mark. It may stand for deleted letters, as in a contraction, or it may be a way to show ownership, as in a possessive, and it may look identical to a...The colon is one of the most versatile of the punctuation marks. It can join clauses, introduce lists, separate minutes from hours, and denote a chapter and verse number. While it has many worthwhile uses, it...Besides the period, the comma may be the most used punctuation mark in English. It may also be the most misunderstood. While a comma often denotes a pause, it may also clarify the meaning of...A dash is a punctuation mark that is often used in order to emphasize the text between the dashes. It often is used instead of parentheses and differs from a hyphen in that it is slightly longer than a hyphen....Each sentence is a complete thought. The punctuation at the end of the sentence tells the reader the sentence is over and tells the type of sentence it is. An exclamation point is at the end of an exclamatory...Shorter than a dash, a hyphen might be considered word "glue." It will join two words to make a compound word, such as one-way street. It may also connect a prefix with a root word to create a new one, such...The punctuation world includes symbols that aren't often used but still have a valuable purpose. The ellipsis, for example, shows omitted text or a trailing thought. A slash often denotes alternative...Quotation marks are punctuation marks most often used to signal direct quotations: the actual words or text that someone said or wrote. However, they may also signal an unusual use of a word, such as an ironic...Half colon and half comma, the semicolon has many uses. It can separate independent clauses when there is no coordinating conjunction, it can separate items in a list when the items have a comma, and it can... Correctly rewrite each date. Place the comma in the correct place and use proper capitalization. Part 2: Explain what is wrong with the way each date is written.1st and 2nd GradesAdd commas to the sentences on this worksheet. Includes commas between coordinate conjunctions, independent clauses, and items in a series.Kindergarten to 2nd GradeAlso on Super Teacher Worksheets...Capitalization WorksheetsWorksheets to teach students about capitalization of sentences, names, dates, and places.Quotation MarksThis page has activities for teaching your students about using quotation marks in dialogue.Proofreading WorksheetsProofread the paragraphs to correct the punctuation, capitalization, and spelling errors.Writing WorksheetsUse these printable worksheets to help students develop their writing skills.Abbreviations WorksheetsLearn to abbreviate days of the week, months of the year, people's titles, states, and measurement units.