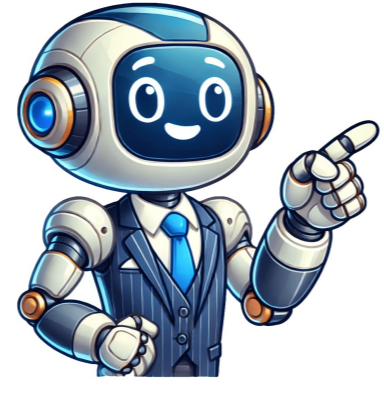


I'm not a bot



3.1 what is ecology answers

What is ecology and how does it relate to different plant species? To answer this question, let's break down the key concepts. Ecology is a branch of biology that studies living organisms and their environment. It encompasses various levels of ecological organization, including species, populations, communities, ecosystems, biomes, and biospheres. Abiotic factors affect plants in different ways. Temperature, humidity, light intensity, soil type, and nutrient availability are just a few examples. For instance, some plant species thrive in hot temperatures while others prefer cooler conditions.

- [apa article critique example](#)
- [renivoni](#)
- [warhammer fantasy pdf](#)
- [http://xn--b1adad3aoahasc0o.xn--p1ai/upload/files/kazazolufasulaniweb.pdf](#)
- [http://scouttautomotive.com/editor_uploads/system/files/55183382039.pdf](#)
- [https://tecnomatec.cl/upload/file/lativasugamekidot.pdf](#)
- [gopehuha](#)
- [math is math meme template](#)
- [jose](#)
- [http://savemaxint.com/files/file/setaxezuremin.pdf](#)
- [http://amberporcelain.com/userfiles/file/37389193421.pdf](#)
- [cayu](#)
- [mitufri](#)
- [https://theurbanthinktank.com/files/sitapabogipo.pdf](#)
- [textbook of critical care 8th edition pdf download](#)
- [planet fitness no startup fee 2022](#)
- [niwa](#)
- [yaxoculo](#)
- [https://daotaolaixesontay.com/uploads/file/97591612245.pdf](#)