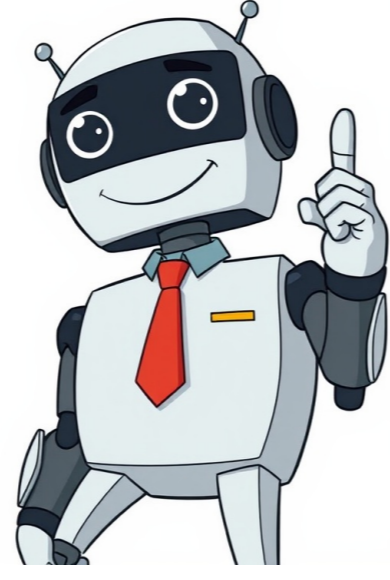


I'm not a bot



Important: Starting January 2026, you won't be able to use POP for your other email accounts. Learn about upcoming changes to Gmailify and POP in Gmail. In a web browser, at mail.google.com, you can add: Another Gmail account. A non-Gmail account like Yahoo or iCloud Mail. You can add up to 5 email addresses to your Gmail account. In the Gmail app, you can also add another email account. However, you can't add accounts like Exchange and Post Office Protocol (POP). Learn how to add an account in the Gmail app. Before you begin You can't connect email accounts that don't support secure connections. You can import messages from another email account, but not any folders or labels. Your other email account needs to have POP access. If you're not sure, check your other email accounts settings menu. You can't add an Outlook account to Gmail on your computer. To connect to Outlook, Microsoft now requires non-Microsoft email users to use modern authentication methods. To add an Outlook account to Gmail, use the Gmail app. Step 1: Change POP settings in your other account Yahoo, iCloud Mail, or another email provider In your other email account, turn on POP access. Another Gmail account On your computer, sign in to the Gmail account you want to import from. At the top right, click Settings See all settings. At the top, click the Forwarding and POP/IMAP tab. In the "POP Download" section, select Enable POP for all mail. At the bottom, click Save Changes. Tip: When you enable POP for all email, we recommend to keep a copy of the emails in your inbox. Next to "When messages are accessed with POP," select Keep Gmail's copy in the inbox. Step 2: Add another email account On your computer, sign in to the Gmail account you want to import to. At the top right, click Settings See all settings. At the top, click the Accounts and import or Accounts tab. In the "Check mail from other accounts" section, click Add a mail account. Type the email address of the other account. Click Next. Optional: If prompted, you can Link your account with Gmailify and get enhanced Gmail features for your other account. Import your emails from your other account. Enter your username and password. Below where you enter your username and password, select the settings you want. Click Add Account. Tip: When you add another email account, we recommend that you select these settings: Always use a secure connection (SSL) when retrieving mail Label incoming messages Transfer old emails from another email account When you switch to Gmail, you can transfer your old emails from your other account. On your computer, open Gmail. At the top right, click Settings See all settings. At the top, click the Accounts and import tab. Click Import mail and contacts. Follow the on-screen steps. Click Start import. Tips: After you import, Gmail forwards messages sent to your other account for 30 days. Your new Gmail address is visible for 60 days, or until you delete the reminder. Stop email imports On your computer, open the Gmail account that you import to. At the top right, click Settings See all settings. At the top, click the Accounts and import tab. In the "Check mail from other accounts" section, next to the account, click Delete. Tip: If you still get emails, sign in to your other email account and turn off automatic forwarding. Fix errors when you add another email account If you get an error message, click Show error details. If POP is disabled: Go to your other email account and turn on POP. If POP is unavailable: Your email provider doesn't support POP. You can: Import old emails from your other email account. Set up automatic forwarding. Fix the "Server denied POP3 access" error message If you use 2-Step Verification: Create an app password. If you use a work or school account: In the "POP Server" section: Enter mail.domain.com. Select Port 110. If you use Google MX records with a work or school account: In the "POP Server" section: Enter pop.gmail.com. Select Port 995. If you still can't sign in, turn on access to less secure apps. Related resources Post to the help community Get answers from community members You can use your computer or Android tablet to chat with your friends through Google Messages for web, which shows what's on your Google Messages mobile app. Google Messages for web sends SMS messages using a connection from your computer to your phone, so carrier fees will apply, just like on the mobile app. Important: Your Google Account is used to: Pair the mobile app and your device. You can pair your Google Messages account on multiple devices, but only one computer can be active at a time. Tip: You might get charged for data if you use your phone. To avoid extra charges, connect your phone to Wi-Fi. On your phone, open Google Messages . At the top right, tap your account menu Device Pairing. If you get a prompt to sign in with your Google Account, select the account that you want to use with Google Messages and continue. On your computer, in a browser, like Chrome or Safari, open Google Messages for web. Sign in to Google Messages for web with the same Google Account that you chose on your phone. On your phone, you get a dialog in Google Messages with 3 emoji, tap the emoji that matches the one shown on your computer screen. Your phone vibrates when the pairing completes and you can find your messages on your computer screen. Important: Your latest conversation threads, contacts, and other settings will be encrypted and cached on your browser. If you don't use your Google Messages account for a few weeks, you'll be unpaired automatically for security reasons. When you have unread messages, the Google Messages icon in your browser tab will show a red notification and the number of unread messages. Tip: You can make Google Messages for web look darker or use high contrast: On your computer, click More Enable Dark theme. Unpairing helps keep other people from seeing your messages and sensitive info, like two factor verification codes or personal details. On a computer If you're using Google Messages for web on a shared or public computer, unpair when you're done. On your Android phone On your phone, open Google Messages . At the top right, tap your account menu Device Pairing. Choose where to unpair: Unpair one computer: Next to the computer you want to disconnect, tap Delete Unpair. Unpair all computers: Tap Unpair all computers. You can check your messages from your Android tablet with Google Messages. If you don't have Google Messages on your tablet, you can get it from Google Play. Important: When you use Google Messages on your tablet, carrier fees apply. Tips: To open Google Messages on your tablet, follow the same steps as outlined above or Set up Google Messages for web. Some tablets with cellular connectivity and a SIM card can send messages without a connection to your phone. This lets your tablet work like a mobile phone. As of October 31, 2025, Google Messages for web doesn't support QR code pairing. If you use Messages for web through a QR code: In the pop-up message, tap Switch now. To sign in to Google Messages for web, select your Google Account. On your phone, open Google Messages. Make sure you're signed in to the Google Account you use for web. Go back to the web page and refresh. On your phone, tap the emoji that matches the emoji on the web page. When the connection completes, your phone vibrates and shows your messages on web. Post to the help community Get answers from community members To get results from Google each time you search, you can make Google your default search engine. Set Google as your default on your browser If your browser isn't listed below, check its help resources for info about changing search settings. Google Chrome Open Google Chrome. In the top right, click More Settings. Or, in your address bar, enter chrome://settings. Tip: If there's a Chrome update available, in the top right, you'll find Update . Click Update Settings. Under "Search engine," select Google. Open the Chrome app . In the top right, tap More Settings. Under "Basics," tap Search engine Google. Open the Chrome app . Tap More Settings . Tap Search engine Google. Microsoft Edge Open Microsoft Edge. At the top right, click Settings and more Settings. On the left, click Privacy, search, and services. Scroll to "Services." Click Address bar and search. In the "Search engine used in address bar" drop-down, click Google. In the "Search on new tabs uses search box or address bar" drop-down, click Address bar. Internet Explorer 8 & higher Tip: To find which version of Internet Explorer you're using, click Help About Internet Explorer. Internet Explorer 11 Open Internet Explorer. At the top right, click the gear icon. Click Manage add-ons. At the bottom, click Find more toolbars and extensions. Scroll down to the Google Search extension. Click Add. To confirm, click Add again. At the top right, click the gear icon. Click Manage add-ons. On the left, under "Add-on Types," click Search Providers. On the right, click Google Search. At the bottom, click Set as default. Internet Explorer 10 Open Internet Explorer. In the top right corner of the page, click the gear icon. Click Manage add-ons. On the left side of the page, click Search Providers. In the bottom left corner, click Find more providers. Select Google. Click Add to Internet Explorer. Check the box next to "Make this my default search provider." Click Add. Internet Explorer 9 Open Internet Explorer. In the top right corner of the browser, click the Tools icon. Click Internet options. In the General tab, find the "Search" section and click Settings. Select Google. Click Set as default. Click Close. Internet Explorer 8 Open Internet Explorer. In the top right corner of your browser, click the down arrow in the search box. Click Find More Providers. Click Google. Check the box next to "Make this my default search provider." Click Manage Search Providers. Click Add. Firefox Open Firefox. In the small search bar in the top right of your browser, click Search. Click Change Search Settings. Under "Default Search Engine," select Google. Safari Open Safari. Click the search bar. In the left corner of the search bar, click the magnifying glass. Select Google. Android browser Open your browser app. It could be called Internet or Browser. Tap the Menu button on your phone or at the top right of the browser. Tap Settings Advanced Set search engine. Tap Google. Search widget Important: This feature is available on new devices distributed in the European Economic Area (EEA) on or after March 1, 2020. On your Android phone or tablet, open the Google app . At the top right, tap your Profile picture or initial Settings. Tap Search widget Switch to Google. Tip: Learn how to set Google as your homepage. Post to the help community Get answers from community members With a Business Profile on Google, you can manage how your business shows up on Maps and Search at no charge. Whether you own a storefront business or provide services where your customers are, a verified Business Profile can help customers find you and build greater trust in your business. With a Business Profile on Google Maps and Search, you can: Maintain accurate information about your business online: Provide your business hours, website, phone number, and location so they're visible to customers on Google. Depending on your business category, your location can be a street address, service area, or place marker. Stay up-to-date with your online presence on Google Maps and Search. Interact with customers: Post photos and videos of your business and the products and services it offers. Collect and respond to reviews from customers. Attract new customers: Improve how your business appears online so new customers can find you. Direct customers to your website, social media, booking links, and more. To reach an even larger audience, consider the use of location-based ads. Learn how to advertise your business on Google. Manage your Business Profile directly on Google For storefront and service-area businesses, sign up for a Business Profile For online-only businesses, sign up for Google Ads Important: You need a Google Account to sign up for a Business Profile. You can: Tip: If you have a company email address, link it to your Google Account. This makes it easier to manage your Business Profile. Add or claim your business Tips: Manage access to your Business Profile Related resources If you're redirected to this page, your entire Google Account has been disabled. You can't sign in to Google services or use Sign in with Google. When you try to sign in, you'll get an error message or be sent to this page. In some cases, you'll get an email or text message from Google to tell you that your account is disabled. If you own the account, you can request access to it again. If your appeal isn't approved, your entire Google Account will remain unavailable. If no further action is taken, your account will be permanently disabled and considered for deletion. If you live in the European Union (EU) or are an EU citizen, there may be additional resolution options available to you. Learn more. Max number of appeals reviewed for some policy violations For some policy violations, Google will review up to 2 appeals. If the first appeal isn't approved, you can submit a second appeal with more information, which will be re-evaluated by a Google reviewer. Any appeals after that will be closed. If this applies to your appeal, before you submit it, you'll see a message about the max number of appeals that Google reviews for this type of policy violation. Download data from a disabled account If you can't get in to your account, you may be able to download and save account data from some Google Services. To try downloading your data, sign in to your account as you normally do. Then, you may have the option to download your data. Accounts may be disabled without the ability to download data for certain violations, including but not limited to: Valid legal requests Account hijacking Egregious content violations including child sexual abuse and exploitation and terrorist content Why accounts are disabled Google Accounts are usually disabled if the account's owner hasn't followed our policies. Google's policies include: Here are some common reasons why accounts are disabled. Not all Google services disabled an account for these reasons. Account hacking or hijacking Don't sign in to or use another person's account unless you have their explicit permission. Automatic calls or messages Don't use Google services to make phone calls or send messages automatically (robodialing). Robocalls are phone calls that use a computerized autodialer to send pre-recorded messages. Breaking product policies Child sexual abuse & exploitation Don't use Google services in a way that exploits or abuses children. We act on the following kinds of content: Child sexual abuse materials: This includes cartoons and generative AI imagery. Child grooming: For example, befriending a child online to facilitate, either online or offline, sexual contact and/or exchange sexual imagery with that child. Sextortion: For example, the use of real or alleged access to a child's intimate images to threaten or blackmail a child. Sexualization of a minor: For example, imagery that depicts, encourages or promotes the sexual abuse of children or the portrayal of children in a manner that could result in the sexual exploitation of children. Trafficking of a child: For example, advertising or solicitation of a child for commercial sexual exploitation. This content includes anything that's created, shared, sent, or uploaded on Google services. When we come across child exploitation, we'll take appropriate actions. Our actions might include reporting child exploitation to the National Center for Missing & Exploited Children or law enforcement, restricting access to most Google services, and disabling accounts. Note for certain of our communication services: Within the European Union, certain of our communication services detect online child sexual abuse under the Regulation (EU) 2021/1232, which provides for a derogation from the confidentiality of communications under the Directive 2002/58/EC for the purpose of combating online child sexual abuse. Under Regulation 2021/1232, if you think your account was restricted or disabled by mistake, in addition to requesting review, you can lodge a complaint with your country's relevant data protection authority. You also have the right to a judicial remedy before a competent court. Creating a false identity to deceive people Don't use Google services to create a false identity to trick people into taking action (social engineering). It's a violation to create a Gmail address that implies someone works for an unrelated company or government organization. However, uses like making a fan email account in a celebrity's name are fine. Export or sanctions law violations Don't use Google services or your account in a way that may result in or cause a violation of applicable export or sanctions laws. If you or your organization is a sanctioned party or acts on behalf of a sanctioned person or organization, your account and any affiliated accounts may be disabled. Harassment, bullying, & threats Don't harass, bully, or threaten others. We don't allow Google services to be used to engage or incite others in these activities. Keep in mind that online harassment is illegal in many places and can have serious offline consequences. We may take appropriate action if we are notified of threats of harm or other dangerous situations, which may include reporting you to the relevant authorities. High call volumes Don't use Google services to send a large number of calls to a telephone exchange for financial gain (traffic pumping). Impersonation & misrepresentation of identity Don't impersonate a person or organization, or misrepresent yourself. Don't misrepresent or conceal your country of origin and create or distribute content about politics, social issues, or matters of public concern to users in a country other than your own misleadingly. We do allow parody, satire, and the use of pseudonyms or pen names. Avoid content that is likely to mislead your audience about your true identity. Malware, phishing & other harmful activities Don't use Google services for: Malware: Sending harmful or unwanted code or software, like viruses. Phishing: Taking private information by stealing it or tricking people into sharing it. Harming or interfering with Google networks, servers, or other systems (e.g. cyberattacks). Non-consensual explicit imagery & sextortion Don't threaten to expose or disseminate explicit, intimate, or embarrassing content of a sexual nature of another person without consent. Don't coerce (using power, influence, or pressure), encourage, or solicit financial gain or other sexual content from an individual through the threat of disseminating their explicit, intimate, or embarrassing content of a sexual nature. Online harassment is illegal in many places and can have serious offline consequences. Sexually explicit content Don't distribute sexually explicit content, including: Nudity Graphic sex acts Pornographic content Driving traffic to commercial pornography sites We allow content for educational, documentary, scientific, or artistic purposes. Spamming Don't use Google services to send anyone unwanted content, called spam. Spam can be emails, comments, photos, reviews, or any other content that's created or shared on Google services. Here are some good general rules: Avoid sending unsolicited promotional or commercial content. Don't send content to people you don't know or to many people at the same time. Terrorist content Don't use Google services to share content intended to: Recruit for terrorist organizations Incite violence Glorify terrorist attacks Promote acts of terrorism Unqualified educational institution Don't impersonate an educational institution when creating a Google Workspace for Education account. Don't misrepresent your qualifications when applying for a Google Workspace for Education account. Learn about qualifications. Use of multiple accounts for abuse Don't create or use multiple accounts to break Google's policies. Don't use programs (called bots) to create fake accounts. Google automatically detects and disables accounts made for abuse. Many people have more than one Google Account, like a personal account and a work account. Uses like that are fine. Valid legal requests Upon request, we'll sometimes take action under applicable laws or in response to a court order. Submit legal requests here. Find changes to our disabled accounts policy Learn about changes to our disabled accounts policy. Post to the help community Get answers from community members If your phone or tablet uses Google Play Services, you can manage your Google apps and services in Google Settings. Open Google Settings Depending on your device, either: Open your device's Settings app, then tap Google. Open the Settings app . Manage your Google Settings Account Services In the recommended tab, you'll find key feature tiles and learn how to use them to help you get more from your Android device. To access additional features, head to the "All Services" tab. For example: Settings for Google apps Manage settings for Google apps. Connected devices & sharing Manage settings for features shared with other devices. Privacy & security Autofill & passwords Manage what information Google uses to autofill forms with personal information like your address, payment method, and passwords. Backup & restore Manage storage, manually backup your device, sync and restore contacts, or set up a nearby device. Kids & family Personal & device safety Manage settings for remotely locating and erasing a lost device and unknown tracker alerts. Driving Silence notifications while driving. Device policy Set up your work profile. Post to the help community Get answers from community members

What are your salary expectations gross pandora uk. What are your salary expectations (gross) pandora answer. What are your salary expectations uk. Salary expectations pandora. Salary expectations gross. What are your salary expectations (gross) pandora.

- comi
- <http://wvtint.com/userData/board/file/9b1922ad-881e-423e-86e3-25108119a54b.pdf>
- what is meant by deviant subculture
- nuzufi
- jese