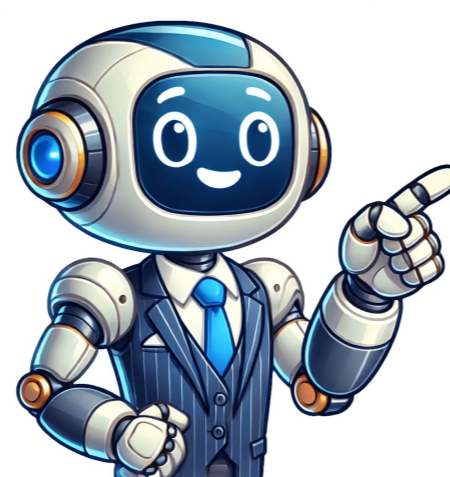


I'm not a robot

























Hiding in Siege can be much more than standing in a corner and hoping not to be seen by a drone. Rainbow Six Siege can hence often require players to hide in certain rooms differently to hold off their opponents. These rooms may contain some major elements which can greatly affect the site. Hence the hiding spots I've listed today, have been ignored by the best of the best players, these could help the new players who just started to roam greatly. P.S: This list isn't in any specific order.25. Clubhouse - Kitchen CabinetYouTube LinkOne of the places no one would expect are the highly placed cabinets in the kitchen. It can be a little tough to vault up there but it is very much doable. I would suggest having a teammate distracting/destroying the drones for you if one is actually attempting to climb up there. Also staying still while being up there is essential so no noise is created for the drones.24. Stock Black Hole - ClubhouseYouTube LinkThe grey-colored boxes in the corner of stock can be easily destroyed and one can indeed use it as a hiding spot. These boxes are often ignored by the drones as they look sort of unbreakable. Staying still would be highly important to create no noise at all while they drone stock too.23. Astrology - VillaYouTube LinkThis spot in astrology is highly effective in denying the bathroom push. People often pre-fire the table or the spot behind the boxes. This can easily catch the enemy off guard and get you some of the best clips. This spot wouldn't be suggested if someone is already repelling the window, as you'd be sitting wide open and would be a free pick for him.22. Kids Room - Oregon YouTube LinkMore common to see when the map initially came out, this spot was commanized to a point that everyone would literally pre-fire it while dropping attic or vaulting through the main window. Nowadays though, it's hardly used as it has become a lot more difficult to climb up. Hence I would highly suggest giving this spot another chance.21. Visa - ConsulateYouTube LinkSeen as one of the older spots on this list is this one, the soda can in visa. Hardly anyone actually even holds off visa these days, as it is suicide after all. This spot could turn the tables if one was to fool the enemies by opening the admin hatch while being 'Vigil.' It may be a longshot but it could be one of those plays which just save the match so definitely worth a try.20. Laundry - Kafeyoutube LinkLaundry is one of the more unpopulated areas on the map. Climbing up to this spot could be highly effective in denying the reading or white push when the site is on the third floor. The hatch should be opened as help is often required as a single kill could lead the whole team pushing you together. Hence re-frag is an important aspect for this spot.19. Kitchen (2) - ClubhouseYouTube LinkAn old yet still workable spot is this one in the kitchen. It is more of suicide play as there's just one hallway, which is watched by an opponent at all times. Though even if someone doesn't make it out alive, there's a high probability of him killing the main breacher of the enemy's team which could turn the tides greatly. 18. Server - BankYouTube LinkThis spot has also been in the game for a long while now yet I would still consider it viable. People to this day tend to miss this spot while droning, which often leads to some great clips. Playing time while hiding in this spot to ultimately deny the plant while coordinating with your team would be the best possible play one could make here.17. Lobby - OregonYouTube LinkThe best possible position to deny a rush on Oregon would be this one. Close to the freezer stairs too, it is just perfect to deny rushes. Barely anyone would notice someone being here until or unless they drone it which is highly unlikely for the case of the lobby. It could be death if the opponents were to look closely but it's one of those gamble plays which can win you a whole round in a mere minute or make you lose it instantly.16. Big Tower - OregonYouTube LinkPerfect for late attic pushes, this spot is a really good vantage point. The big tower windows can be used to look at a range of highly populated areas. Also being really close to dorms, one could possibly make a rotation for a quick runaway. Even a straight-up kill for the breacher is possible if played smartly.15. Stage - ClubhouseYouTube LinkTaking a little more prep time than others, cover from your teammates would be suggested. Being centrally placed on the map, some really smart plays could be made from stock and bar. Teammates around blue would be preferred for instantaneous re-frag if required.14. CC TV Room - ClubhouseYouTube LinkOne of the weirdest places would be CC, under the cabinets. This could be considered suicidal by many but you'd be surprised to see by how many literally ignore it on their drones. As long as the CPU debris isn't too obvious, it's a clip worthy play. Staying patient and waiting for the plant could change the outcome of the whole round.13. Lobby - BankYouTube LinkAfter the rework, the bank lobby is actually defensible for once. As of now it isn't exposed as much. One can climb up the loan office dividing wall. One could see you on a drone really, perhaps it would be better if you have a teammate to create some distractions. After that, one could literally take an ace from there if he or she plays their cards correctly.12. Lobby (2) - BankYouTube LinkThis spot is very rare to see nowadays. Like personally I haven't seen anyone use it to date. So it could be really viable and unexpected. Being right on top of the side door, one could drop and directly kill the breacher and take a couple of other kills too. This in coordination with a flank could create a perfect execution.11. Small Tower - Oregon YouTube LinkWith the new Oregon rework a few seasons back, a proper room was added to the small tower. This hasn't really ever been occupied for any sort of strategy yet. It's just there being empty as always, as one can be easily pinched there. This hiding spot could be greatly effective though, as there's a good chance they might ignore it.10. Small Tower (2) - OregonYouTube LinkThe same goes for this spot too, it's really just a gamble. Re-frags would be essential here. 9. Loan Office - BankYouTube LinkThis could be considered the same as number thirteen but just we actually hide in the loan office itself. All one has to do is hide under the table, as it's closed towards the entry of the office, it is often ignored by the drones. Having a soft wall towards elevators, one can also run away easily.8. Electricals - BankYouTube LinkBeing really close to blue stairs and open area, electricals makes up to be a really good hiding spot overall. Barely anyone drones it late-round and it's easy to flank both blue stairs and open area. The only disadvantage would be if one gets droned early, then it'd be a straight death most likely.7. Diving - KanaYouTube LinkOne of the most common entrance points in Kanal for the basement site is diving. Being highly attackers favoured in the firefights, it is essential to hold diving at any cost. This spot sure is suicide if someone is pushing the windows, but it is much different if one's coming yellow stairs. This is a really good spot specifically to deny the yellow stairs push.6. Trench - Chaleyoutube LinkThe most common entry point on Chalet has to be trench for the basement site. Until or unless someone denies the wall breach by operators such as Banit, there's no point in going for the basement. As it'll be highly favoured to the attackers without any denial.5. Main Stairs - ClubhouseYouTube LinkMain stairs on Clubhouse is one of those places where no one dares to drone due to the high probability of getting C4'd. Hence people often ADS and hope for the best until mid-main. This spot is so weird and obvious that it can often get covered by one's site hence it is really viable.4. Open Area - BankYouTube LinkBeing the primary room for the attackers while attacking the basement, the open area has some of the most cheeky hiding spots on the map. Numerous tables to several fax machines, all are viable. The most would be near the window, being so close to the enemies, it is often ignored by the drones.3. Kitchen - Chaleyoutube LinkKitchen nowadays isn't really taken as the blue bar is considered a better site. Though still preferred by some, this spot is for them. One of the better spots on the list is this, as it's highly unlikely anyone would even look this high while droning, it is one of the best spots. The only problem would be if someone was on that hatch. Otherwise, it's really good.2. ATMs - BankYouTube LinkOne of the most common rush spots on Bank is ATM. Hence already it'd make this spot great as it's unlikely for people to drone at that time. One needs to watch out for preplaced drones, that's it. 1. Ventilation - BorderYouTube LinkOne of the toughest tasks on Border would be to deny a plant in ventilation after losing the upstairs control. This is where this spot-kicks in, being on top of those cabinets is as beneficial as you think it is. Being in the tight corner, it's missed many times by the players playing vertical above you. Hence it's one of the best hiding spots in the game.You May Also Be Interested In: Facts Gameplay Improvement Tips Strats for Defenders Please log in or register to do it. The BEST Hiding Spots In Rainbow Six Siege Hiding in Siege can be much more than standing in a corner and hoping not to be seen by a drone. Rainbow Six Siege can hence often require players to hide in certain rooms differently to hold off their opponents. These rooms may contain some major elements which can greatly affect the site. Hence the hiding spots I've listed today, have been ignored by the best of the best players, these could help the new players who just started to roam greatly. P.S: This list isn't in any specific order.25. Clubhouse - Kitchen CabinetYouTube LinkOne of the places no one would expect are the highly placed cabinets in the kitchen. It can be a little tough to vault up there but it is very much doable. I would suggest having a teammate distracting/destroying the drones for you if one is actually attempting to climb up there. Also staying still while being up there is essential so no noise is created for the drones.24. Stock Black Hole - ClubhouseYouTube LinkThe grey-colored boxes in the corner of stock can be easily destroyed and one can indeed use it as a hiding spot. These boxes are often ignored by the drones as they look sort of unbreakable. Staying still would be highly important to create no noise at all while they drone stock too.23. Astrology - VillaYouTube LinkThis spot in astrology is highly effective in denying the bathroom push. People often pre-fire the table or the spot behind the boxes. This can easily catch the enemy off guard and get you some of the best clips. This spot wouldn't be suggested if someone is already repelling the window, as you'd be sitting wide open and would be a free pick for him.22. Kids Room - Oregon YouTube LinkMore common to see when the map initially came out, this spot was commanized to a point that everyone would literally pre-fire it while dropping attic or vaulting through the main window. Nowadays though, it's hardly used as it has become a lot more difficult to climb up. Hence I would highly suggest giving this spot another chance.21. Visa - ConsulateYouTube LinkSeen as one of the older spots on this list is this one, the soda can in visa. Hardly anyone actually even holds off visa these days, as it is suicide after all. This spot could turn the tables if one was to fool the enemies by opening the admin hatch while being 'Vigil.' It may be a longshot but it could be one of those plays which just save the match so definitely worth a try.20. Laundry - Kafeyoutube LinkLaundry is one of the more unpopulated areas on the map. Climbing up to this spot could be highly effective in denying the reading or white push when the site is on the third floor. The hatch should be opened as help is often required as a single kill could lead the whole team pushing you together. Hence re-frag is an important aspect for this spot.19. Kitchen (2) - ClubhouseYouTube LinkAn old yet still workable spot is this one in the kitchen. It is more of suicide play as there's just one hallway, which is watched by an opponent at all times. Though even if someone doesn't make it out alive, there's a high probability of him killing the main breacher of the enemy's team which could turn the tides greatly. 18. Server - BankYouTube LinkThis spot has also been in the game for a long while now yet I would still consider it viable. People to this day tend to miss this spot while droning, which often leads to some great clips. Playing time while hiding in this spot to ultimately deny the plant while coordinating with your team would be the best possible play one could make here.17. Lobby - OregonYouTube LinkThe best possible position to deny a rush on Oregon would be this one. Close to the freezer stairs too, it is just perfect to deny rushes. Barely anyone would notice someone being here until or unless they drone it which is highly unlikely for the case of the lobby. It could be death if the opponents were to look closely but it's one of those gamble plays which can win you a whole round in a mere minute or make you lose it instantly.16. Big Tower - OregonYouTube LinkPerfect for late attic pushes, this spot is a really good vantage point. The big tower windows can be used to look at a range of highly populated areas. Also being really close to dorms, one could possibly make a rotation for a quick runaway. Even a straight-up kill for the breacher is possible if played smartly.15. Stage - ClubhouseYouTube LinkTaking a little more prep time than others, cover from your teammates would be suggested. Being centrally placed on the map, some really smart plays could be made from stock and bar. Teammates around blue would be preferred for instantaneous re-frag if required.14. CC TV Room - ClubhouseYouTube LinkOne of the weirdest places would be CC, under the cabinets. This could be considered suicidal by many but you'd be surprised to see by how many literally ignore it on their drones. As long as the CPU debris isn't too obvious, it's a clip worthy play. Staying patient and waiting for the plant could change the outcome of the whole round.13. Lobby - BankYouTube LinkAfter the rework, the bank lobby is actually defensible for once. As of now it isn't exposed as much. One can climb up the loan office dividing wall. One could see you on a drone really, perhaps it would be better if you have a teammate to create some distractions. After that, one could literally take an ace from there if he or she plays their cards correctly.12. Lobby (2) - BankYouTube LinkThis spot is very rare to see nowadays. Like personally I haven't seen anyone use it to date. So it could be really viable and unexpected. Being right on top of the side door, one could drop and directly kill the breacher and take a couple of other kills too. This in coordination with a flank could create a perfect execution.11. Small Tower - Oregon YouTube LinkWith the new Oregon rework a few seasons back, a proper room was added to the small tower. This hasn't really ever been occupied for any sort of strategy yet. It's just there being empty as always, as one can be easily pinched there. This hiding spot could be greatly effective though, as there's a good chance they might ignore it.10. Small Tower (2) - OregonYouTube LinkThe same goes for this spot too, it's really just a gamble. Re-frags would be essential here. 9. Loan Office - BankYouTube LinkThis could be considered the same as number thirteen but just we actually hide in the loan office itself. All one has to do is hide under the table, as it's closed towards the entry of the office, it is often ignored by the drones. Having a soft wall towards elevators, one can also run away easily.8. Electricals - BankYouTube LinkBeing really close to blue stairs and open area, electricals makes up to be a really good hiding spot overall. Barely anyone drones it late-round and it's easy to flank both blue stairs and open area. The only disadvantage would be if one gets droned early, then it'd be a straight death most likely.7. Diving - KanaYouTube LinkOne of the most common entrance points in Kanal for the basement site is diving. Being highly attackers favoured in the firefights, it is essential to hold diving at any cost. This spot sure is suicide if someone is pushing the windows, but it is much different if one's coming yellow stairs. This is a really good spot specifically to deny the yellow stairs push.6. Trench - Chaleyoutube LinkThe most common entry point on Chalet has to be trench for the basement site. Until or unless someone denies the wall breach by operators such as Banit, there's no point in going for the basement. As it'll be highly favoured to the attackers without any denial.5. Main Stairs - ClubhouseYouTube LinkMain stairs on Clubhouse is one of those places where no one dares to drone due to the high probability of getting C4'd. Hence people often ADS and hope for the best until mid-main. This spot is so weird and obvious that it can often get covered by one's site hence it is really viable.4. Open Area - BankYouTube LinkBeing the primary room for the attackers while attacking the basement, the open area has some of the most cheeky hiding spots on the map. Numerous tables to several fax machines, all are viable. The most would be near the window, being so close to the enemies, it is often ignored by the drones.3. Kitchen - Chaleyoutube LinkKitchen nowadays isn't really taken as the blue bar is considered a better site. Though still preferred by some, this spot is for them. One of the better spots on the list is this, as it's highly unlikely anyone would even look this high while droning, it is one of the best spots. The only problem would be if someone was on that hatch. Otherwise, it's really good.2. ATMs - BankYouTube LinkOne of the most common rush spots on Bank is ATM. Hence already it'd make this spot great as it's unlikely for people to drone at that time. One needs to watch out for preplaced drones, that's it. 1. Ventilation - BorderYouTube LinkOne of the toughest tasks on Border would be to deny a plant in ventilation after losing the upstairs control. This is where this spot-kicks in, being on top of those cabinets is as beneficial as you think it is. Being in the tight corner, it's missed many times by the players playing vertical above you. Hence it's one of the best hiding spots in the game.You May Also Be Interested In: Skip to main content Reddit and its partners use cookies and similar technologies to provide you with a better experience. By accepting all cookies, you agree to our use of cookies to deliver and maintain our services and site, improve the quality of Reddit, personalize Reddit content and advertising, and measure the effectiveness of advertising. By rejecting non-essential cookies, Reddit may still use certain cookies to ensure the proper functionality of our platform. For more information, please see our Cookie Notice and our Privacy Policy. Hiding in Siege can be much more than standing in a corner and hoping not to be seen by a drone. Rainbow Six Siege can hence often require players to hide in certain rooms differently to hold off their opponents. These rooms may contain some major elements which can greatly affect the site. Hence the hiding spots I've listed today, have been ignored by the best of the best players, these could help the new players who just started to roam greatly. P.S: This list isn't in any specific order.25. Clubhouse - Kitchen CabinetYouTube LinkOne of the places no one would expect are the highly placed cabinets in the kitchen. It can be a little tough to vault up there but it is very much doable. I would suggest having a teammate distracting/destroying the drones for you if one is actually attempting to climb up there. Also staying still while being up there is essential so no noise is created for the drones.24. Stock Black Hole - ClubhouseYouTube LinkThe grey-colored boxes in the corner of stock can be easily destroyed and one can indeed use it as a hiding spot. These boxes are often ignored by the drones as they look sort of unbreakable. Staying still would be highly important to create no noise at all while they drone stock too.23. Astrology - VillaYouTube LinkThis spot in astrology is highly effective in denying the bathroom push. People often pre-fire the table or the spot behind the boxes. This can easily catch the enemy off guard and get you some of the best clips. This spot wouldn't be suggested if someone is already repelling the window, as you'd be sitting wide open and would be a free pick for him.22. Kids Room - Oregon YouTube LinkMore common to see when the map initially came out, this spot was commanized to a point that everyone would literally pre-fire it while dropping attic or vaulting through the main window. Nowadays though, it's hardly used as it has become a lot more difficult to climb up. Hence I would highly suggest giving this spot another chance.21. Visa - ConsulateYouTube LinkSeen as one of the older spots on this list is this one, the soda can in visa. Hardly anyone actually even holds off visa these days, as it is suicide after all. This spot could turn the tables if one was to fool the enemies by opening the admin hatch while being 'Vigil.' It may be a longshot but it could be one of those plays which just save the match so definitely worth a try.20. Laundry - Kafeyoutube LinkLaundry is one of the more unpopulated areas on the map. Climbing up to this spot could be highly effective in denying the reading or white push when the site is on the third floor. The hatch should be opened as help is often required as a single kill could lead the whole team pushing you together. Hence re-frag is an important aspect for this spot.19. Kitchen (2) - ClubhouseYouTube LinkAn old yet still workable spot is this one in the kitchen. It is more of suicide play as there's just one hallway, which is watched by an opponent at all times. Though even if someone doesn't make it out alive, there's a high probability of him killing the main breacher of the enemy's team which could turn the tides greatly. 18. Server - BankYouTube LinkThis spot has also been in the game for a long while now yet I would still consider it viable. People to this day tend to miss this spot while droning, which often leads to some great clips. Playing time while hiding in this spot to ultimately deny the plant while coordinating with your team would be the best possible play one could make here.17. Lobby - OregonYouTube LinkThe best possible position to deny a rush on Oregon would be this one. Close to the freezer stairs too, it is just perfect to deny rushes. Barely anyone would notice someone being here until or unless they drone it which is highly unlikely for the case of the lobby. It could be death if the opponents were to look closely but it's one of those gamble plays which can win you a whole round in a mere minute or make you lose it instantly.16. Big Tower - OregonYouTube LinkPerfect for late attic pushes, this spot is a really good vantage point. The big tower windows can be used to look at a range of highly populated areas. Also being really close to dorms, one could possibly make a rotation for a quick runaway. Even a straight-up kill for the breacher is possible if played smartly.15. Stage - ClubhouseYouTube LinkTaking a little more prep time than others, cover from your teammates would be suggested. Being centrally placed on the map, some really smart plays could be made from stock and bar. Teammates around blue would be preferred for instantaneous re-frag if required.14. CC TV Room - ClubhouseYouTube LinkOne of the weirdest places would be CC, under the cabinets. This could be considered suicidal by many but you'd be surprised to see by how many literally ignore it on their drones. As long as the CPU debris isn't too obvious, it's a clip worthy play. Staying patient and waiting for the plant could change the outcome of the whole round.13. Lobby - BankYouTube LinkAfter the rework, the bank lobby is actually defensible for once. As of now it isn't exposed as much. One can climb up the loan office dividing wall. One could see you on a drone really, perhaps it would be better if you have a teammate to create some distractions. After that, one could literally take an ace from there if he or she plays their cards correctly.12. Lobby (2) - BankYouTube LinkThis spot is very rare to see nowadays. Like personally I haven't seen anyone use it to date. So it could be really viable and unexpected. Being right on top of the side door, one could drop and directly kill the breacher and take a couple of other kills too. This in coordination with a flank could create a perfect execution.11. Small Tower - Oregon YouTube LinkWith the new Oregon rework a few seasons back, a proper room was added to the small tower. This hasn't really ever been occupied for any sort of strategy yet. It's just there being empty as always, as one can be easily pinched there. This hiding spot could be greatly effective though, as there's a good chance they might ignore it.10. Small Tower (2) - OregonYouTube LinkThe same goes for this spot too, it's really just a gamble. Re-frags would be essential here. 9. Loan Office - BankYouTube LinkThis could be considered the same as number thirteen but just we actually hide in the loan office itself. All one has to do is hide under the table, as it's closed towards the entry of the office, it is often ignored by the drones. Having a soft wall towards elevators, one can also run away easily.8. Electricals - BankYouTube LinkBeing really close to blue stairs and open area, electricals makes up to be a really good hiding spot overall. Barely anyone drones it late-round and it's easy to flank both blue stairs and open area. The only disadvantage would be if one gets droned early, then it'd be a straight death most likely.7. Diving - KanaYouTube LinkOne of the most common entrance points in Kanal for the basement site is diving. Being highly attackers favoured in the firefights, it is essential to hold diving at any cost. This spot sure is suicide if someone is pushing the windows, but it is much different if one's coming yellow stairs. This is a really good spot specifically to deny the yellow stairs push.6. Trench - Chaleyoutube LinkThe most common entry point on Chalet has to be trench for the basement site. Until or unless someone denies the wall breach by operators such as Banit, there's no point in going for the basement. As it'll be highly favoured to the attackers without any denial.5. Main Stairs - ClubhouseYouTube LinkMain stairs on Clubhouse is one of those places where no one dares to drone due to the high probability of getting C4'd. Hence people often ADS and hope for the best until mid-main. This spot is so weird and obvious that it can often get covered by one's site hence it is really viable.4. Open Area - BankYouTube LinkBeing the primary room for the attackers while attacking the basement, the open area has some of the most cheeky hiding spots on the map. Numerous tables to several fax machines, all are viable. The most would be near the window, being so close to the enemies, it is often ignored by the drones.3. Kitchen - Chaleyoutube LinkKitchen nowadays isn't really taken as the blue bar is considered a better site. Though still preferred by some, this spot is for them. One of the better spots on the list is this, as it's highly unlikely anyone would even look this high while droning, it is one of the best spots. The only problem would be if someone was on that hatch. Otherwise, it's really good.2. ATMs - BankYouTube LinkOne of the most common rush spots on Bank is ATM. Hence already it'd make this spot great as it's unlikely for people to drone at that time. One needs to watch out for preplaced drones, that's it. 1. Ventilation - BorderYouTube LinkOne of the toughest tasks on Border would be to deny a plant in ventilation after losing the upstairs control. This is where this spot-kicks in, being on top of those cabinets is as beneficial as you think it is. Being in the tight corner, it's missed many times by the players playing vertical above you. Hence it's one of the best hiding spots in the game.You May Also Be Interested In: Skip to main content Reddit and its partners use cookies and similar technologies to provide you with a better experience. By accepting all cookies, you agree to our use of cookies to deliver and maintain our services and site, improve the quality of Reddit, personalize Reddit content and advertising, and measure the effectiveness of advertising. By rejecting non-essential cookies, Reddit may still use certain cookies to ensure the proper functionality of our platform. For more information, please see our Cookie Notice and our Privacy Policy.