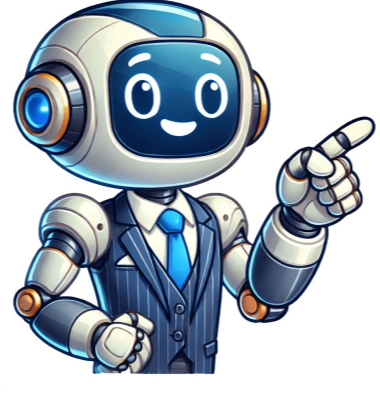


Click to verify



Skip to content Your cart is empty Continue shopping Instruction ManualsWe store all of our instruction manuals here. Please verify the model number and enter it into the search box to download the appropriate instruction manual from the list below. If you have any questions, feel free to visit our Contact Us page or Customer Service. Download Article Download Article Your new digital thermometer can help you quickly and accurately take temperatures, sometimes without even making contact. If you've turned on your thermometer and noticed the display is in Celsius instead of Fahrenheit, rest assured that swapping to your preferred setting is very simple. Whether yours is under-the-tongue or infrared, keep reading to know how to switch the temperature mode on all sorts of digital thermometers. Press and hold the power button to swap modes on one-button thermometers. Push the "°C/°F" or settings buttons on frontal thermometers. You may need to use the arrow buttons or the '+' and '-' buttons to switch settings. Flick the switch in the battery compartment of infrared thermometers. 1 Turn the thermometer off. For digital thermometers with one button, the power button often doubles as the control for changing from °C to °F. To start, make sure the thermometer is off.[1] Thermometers like this include the basic digital thermometers by Vicks, Walgreens, Omron, and more. 2 Press and hold the power button. As you turn the thermometer back on, don't lift your finger off of the button. This will let the thermometer know you are trying to change modes and not just turn it on.[2] Advertisement 3 Release the button after you see the temperature mode change. Check for an "F" in the corner of the screen. Your thermometer may also beep after you've changed modes.[3] Rather than a blinking "F," your thermometer may display the phrase "F-SET" to show you've changed modes. If your thermometer flashes a "C" or reads out "C-SET," you've switched into Celsius. Repeat the process and it will switch back. Advertisement 1 Find the settings button. This button may be labeled with, for example, "MODE," "SET," or "MEM." It may also be marked by a symbol, like a person or a speaker. Press and hold to change from °C to °F.[4] HoMedics, Equate, and other electronic thermometer manufacturers include labeled settings buttons on their products. 2 Press the arrow or '+' and '-' buttons to switch to °F. On some thermometers, pushing the settings button lets the user change multiple settings, not just °C and °F. In this case, press the button several times to open the temperature settings, then use the arrows or the '+' and '-' buttons to switch to °F.[5] You'll know you're in the temperature settings when the °C on the screen begins to flash or changes to an "F." 3 Push the "°C/°F" button. Frontal scanning thermometers sometimes have a button specifically labeled "°C/°F." Look on the front or the side of your thermometer to see if you have one. If so, use this button to freely change between Celsius and Fahrenheit.[6] Advertisement 1 Press the settings button. Most of the time this button will be labeled "MODE" or "SET." Push it to change the temperature settings. Pushing the button once may be enough to change from °C to °F. However, you may need to press several times to open the temperature settings and change from there.[7] To know whether you're in the temperature unit settings, check the screen. The current unit will be flashing. Change it by pushing the arrow keys. For some infrared thermometers produced by Klein Tools, Beurer, and other manufacturers, the settings button won't change the temperature unit. Instead, that button is used to set warning alarms, degree variation, and other modes. The temperature unit controls are in the battery compartment. 2 If the setting button doesn't work, open the battery compartment. Look for the groove on the side of the thermometer handle. Slide your thumb into the groove and push forward to pop open the compartment. Infrared thermometers often have their temperature unit controls here.[8] If the battery compartment cover is too tight, slide the tip of a flathead screwdriver in the space between the cover in the handle. Then, wiggle the screwdriver enough to pop the compartment open. Don't push too hard so that that screwdriver doesn't break the plastic or come in contact with the batteries. 3 Flick the switch above the batteries to change from °C to °F. Toggle it towards the "F" position to display the temperature in Fahrenheit. Flip it back to return it to Celsius.[9] Advertisement Ask a Question Advertisement Thanks Advertisement Reviewed by: Computer & Tech Specialist This article was reviewed by Luigi Oppido and by wikiHow staff writer, Krysten Jackson. Luigi Oppido is the Owner and Operator of Pleasure Point Computers in Santa Cruz, California. Luigi has over 25 years of experience in general computer repair, data recovery, virus removal, and upgrades. He is also the host of the Computer Man Show! broadcasted on KSQD covering central California for over two years. This article has been viewed 233,733 times. Co-authors: 7 Updated: April 21, 2025 Views: 233,733 Categories: Consumer Electronics Print Send fan mail to authors Thanks to all authors for creating a page that has been read 233,733 times. Taylor model 3516t user manual guide2022-10-30T18:45:17+00:00 Viewing 15 posts - 1 through 15 (of 35 total) . Taylor model 3516t user manual guide >> Download / Read Online Taylor model 3516t user manual guide . . . Name: Taylor model 3516t user manual guide.pdf Author: Heljä Benson Pages: 171 Languages: EN, FR, DE, IT, ES, PT, NL and others File size: 7632 Kb Upload Date: 29-10-2022 Last checked: 26 Minutes ago 9 July 2022 Browse Taylor 3516 TruTemp Digital Instant Read Probe Thermometer owner's manuals, user guides, instructional help documents & operating OPERATOR'S MANUAL Model C723. Soft Serve Freezer. Original Operating Instructions. 069127-M. 3/18/11 (Original Publication). (Updated 02/05/16) Missing: 3516t | Must include: 3516t How do I change my Taylor thermometer from Celsius to Fahrenheit? Since 1851, Taylor has provided you with accurate and easy to use thermometers. When it comes to food safety and accuracy in measurement, it's no wonder that Taylor is the tool that chefs trust. INSTRUCTIONS: Press the "°C/°F" button on the back of the thermometer to switch between Fahrenheit or Celsius. How do I adjust my Taylor digital thermometer? Press and hold the "°F/°C" button for 3 seconds to switch between Fahrenheit and Celsius temperature displays. 5. Press the "UP" or "DOWN" button to set the desired target set temperature. Rating 4.0 (1) If quick and easy is your weelright game plan this Digital Instant Read Thermometer will help you cook food safely without muss or fuss. Missing: guide | Must include: guide How do you use a Taylor meat thermometer? Place the thermometer in the thickest part of the food. To gauge the temperature of a large piece of meat, insert the thermometer probe through the center of the thickest part of the meat, avoiding any bones, fat, or gristle. Leave the thermometer in the meat for about 10 seconds to allow the temperature to register. Rating 4.2 (104) USD6.79 In stock Ideal for restaurants, bakeries, delis, cafes and more, this product delivers ease-of-use and durability to help you stay on top of food safety without dragging Products 1 - 50 of 60 Personal care manuals and free healthcare pdf instructions. Find the personal care product Taylor Thermometer User Manual. Pages: 2. 31 May 2019 Letters being displayed on your device can be the result of moisture buildup within the probe, water immersion, exposure to excessive heat Missing: 3516t | Must include: 3516t My probe thermometer is not reading correctly. I have dashes on my digital weather station? Can I use my remote for my digital weather thermometer in below How do you reset a Taylor probe thermometer? To reset the base, you need to remove the batteries and then reinsert . This will also clear out the base unit for time, calendar, etc., if your product has these features. 21 Dec 2012 My grill thermometer went from reading temps in fahrenheit to celsius and I couldn't find anything Duration: 1:17 Posted: 21 Dec 2012 21 Dec 2012 My grill thermometer went from reading temps in fahrenheit to celsius and I couldn't find anything Duration: 1:17 Posted: 21 Dec 2012 Download 146 Taylor Thermometer PDF manuals. User manuals, Taylor Thermometer Operating guides and Service manuals. . taylor indoor/outdoor thermometer manual 1502 Taylor Thermometer LED ThermocoupleTaylor digital thermometer 1470N Manual Taylor thermometer calibration Taylor thermometer 9835 manual Taylor remote thermometer 1730 Manual Taylor thermometer Manual Taylor thermometer error codes . Taylor model 3516t manually Taylor model 3516t lambleabhar Taylor model 3516t handbok Taylor model 3516t user manual Taylor model 3516t handbook Taylor model 3516t كتاب Taylor model 3516t priručka Taylor model 3516t priručka Taylor model 3516t kezkönyv Taylor model 3516t manuel The theme is interesting. I will take part in discussion. I know, that together we can come to a right answer. Viewing 15 posts - 1 through 15 (of 35 total) Download Article Download Article Your new digital thermometer can help you quickly and accurately take temperatures, sometimes without even making contact. If you've turned on your thermometer and noticed the display is in Celsius instead of Fahrenheit, rest assured that swapping to your preferred setting is very simple. Whether yours is under-the-tongue or infrared, keep reading to know how to switch the temperature mode on all sorts of digital thermometers. Press and hold the power button to swap modes on one-button thermometers. Push the "°C/°F" or settings buttons on frontal thermometers. You may need to use the arrow buttons or the '+' and '-' buttons to switch settings. Flick the switch in the battery compartment of infrared thermometers. 1 Turn the thermometer off. For digital thermometers with one button, the power button often doubles as the control for changing from °C to °F. To start, make sure the thermometer is off.[1] Thermometers like this include the basic digital thermometers by Vicks, Walgreens, Omron, and more. 2 Press and hold the power button. As you turn the thermometer back on, don't lift your finger off of the button. This will let the thermometer know you are trying to change modes and not just turn it on.[2] Advertisement 3 Release the button after you see the temperature mode change. Check for an "F" in the corner of the screen. Your thermometer may also beep after you've changed modes. [3] Rather than a blinking "F," your thermometer may display the phrase "F-SET" to show you've changed modes. If your thermometer flashes a "C" or reads out "C-SET," you've switched into Celsius. Repeat the process and it will switch back. Advertisement 1 Find the settings button. This button may be labeled with, for example, "MODE," "SET," or "MEM." It may also be marked by a symbol, like a person or a speaker. Press and hold to change from °C to °F.[4] HoMedics, Equate, and other electronic thermometer manufacturers include labeled settings buttons on their products. 2 Press the arrow or '+' and '-' buttons to switch to °F. On some thermometers, pushing the settings button lets the user change multiple settings, not just °C and °F. In this case, press the button several times to open the temperature settings, then use the arrows or the '+' and '-' buttons to switch to °F.[5] You'll know you're in the temperature settings when the °C on the screen begins to flash or changes to an "F." 3 Push the "°C/°F" button. Frontal scanning thermometers sometimes have a button specifically labeled "°C/°F." Look on the front or the side of your thermometer to see if you have one. If so, use this button to freely change between Celsius and Fahrenheit.[6] Advertisement 1 Press the settings button. Most of the time this button will be labeled "MODE" or "SET." Push it to change the temperature settings. Pushing the button once may be enough to change from °C to °F. However, you may need to press several times to open the temperature settings and change from there.[7] To know whether you're in the temperature unit settings, check the screen. The current unit will be flashing. Change it by pushing the arrow keys. For some infrared thermometers produced by Klein Tools, Beurer, and other manufacturers, the settings button won't change the temperature unit. Instead, that button is used to set warning alarms, degree variation, and other modes. The temperature unit controls are in the battery compartment. 2 If the setting button doesn't work, open the battery compartment. Look for the groove on the side of the thermometer handle. Slide your thumb into the groove and push forward to pop open the compartment. Infrared thermometers often have their temperature unit controls here.[8] If the battery compartment cover is too tight, slide the tip of a flathead screwdriver in the space between the cover in the handle. Then, wiggle the screwdriver enough to pop the compartment open. Don't push too hard so that that screwdriver doesn't break the plastic or come in contact with the batteries. 3 Flick the switch above the batteries to change from °C to °F. Toggle it towards the "F" position to display the temperature in Fahrenheit. Flip it back to return it to Celsius.[9] Advertisement Ask a Question Advertisement Thanks Advertisement Reviewed by: Computer & Tech Specialist This article was reviewed by Luigi Oppido and by wikiHow staff writer, Krysten Jackson. Luigi Oppido is the Owner and Operator of Pleasure Point Computers in Santa Cruz, California. Luigi has over 25 years of experience in general computer repair, data recovery, virus removal, and upgrades. He is also the host of the Computer Man Show! broadcasted on KSQD covering central California for over two years. This article has been viewed 233,733 times. Co-authors: 7 Updated: April 21, 2025 Views: 233,733 Categories: Consumer Electronics Print Send fan mail to authors Thanks to all authors for creating a page that has been read 233,733 times. igital Folding Probe Thermometer Please read this instruction manual carefully before use. Keep these instructions handy for future reference. The thermometer operates on 2 AAA batteries (installed). If readings grow dim or irreg- ular, the batteries may need to be replaced. To replace the batteries: 1. Use 2- AAA batteries. Always replace both batteries at the same time; do not com- bine old and new batteries. Do not mix Alkaline, carbon-zinc (standard) or Nickel- Cadmium (rechargeable) batteries. 2. Unscrew the 2 screws securing the battery compartment cover, located on the back of the unit. Take care not to misplace the screws. 3. Place the batteries into the compartment as indicated by the polarity symbols marked inside the battery compartment. 4. Replace the battery compartment cover and screws 1. Preheat the oven to desired cooking temperature. Place the food in the preheated oven. 2. Sterilize the metal probe by inserting it into an appropriate solution such as boiling water for sev- eral minutes. 3. Press the "Enter" button to turn the unit on. The LCD screen will turn on and display the current probe temperature. 4. Your thermometer is preset to read temperatures in Fahrenheit. To switch to Celsius, press and hold the "°F/°C" button for 3 seconds. 5. Press the "Enter" button to access the Meat Selection screen. The default setting "Beef Rare140.0°F" appears. The temperature digits flash. 6. Press the L or M button to scroll through the 16 meat types and their preprogrammed target tem- peratures. (See Meat/Temperature Chart.) 7. Press "Enter" to select the displayed meat type. The LCD screen returns to the current temper- ature display. The name of the selected meat appears above the temperature reading. 8. To test the internal temperature of the food, unfold the metal probe and insert it into the thickest part of the food. Do not come in contact with bone, fat or gristle, as these areas will not provide accurate temperature readings. Take care when moving the probe into position to avoid injury or damage. DO NOT LEAVE THE THERMOMETER IN THE OVEN WHILE COOKING, AND DO NOT TOUCH THE HOT PROBE WITH BARE HANDS. 9. The current internal temperature of the food appears on the LCD screen. 10. Color coded lights behind the Taylor® logo indicate if the current temperature is lower, higher, or within 5 degrees of the target temperature. • If the temperature is lower than the target temperature, a blue LED light flashes. • When the temperature reaches the target temperature, a green LED light flashes. • If the temperature is higher than the target temperature, a red LED light flashes. . 518/1488/816