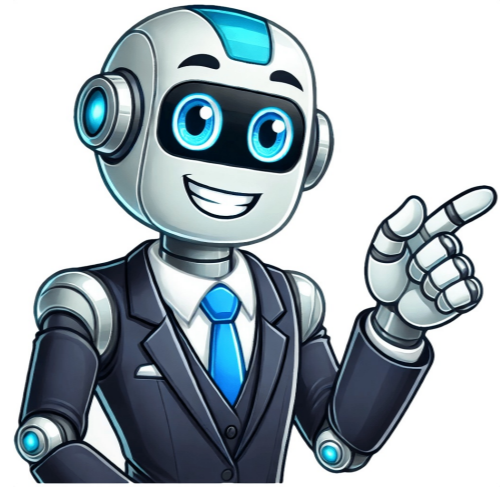


I'm not a robot



The Film Counter Indication LED will light up and the camera is ready for shooting. Step 2: Select A Shooting Mode The Lomolinstan Automat has two different shooting modes to suit your shooting preferences. You can easily select your shooting mode by pressing the Shooting Mode Button. A - Auto Shooting Mode When the camera is on, its Auto Shooting Mode by default so that you will get perfectly exposed photos in various situations. The Lomolinstan Automat determines aperture and shutter speed automatically (and auto flash output if flash is on) for perfect exposures. This is the perfect mode for shooting all hours of the day and night! B - Bulb Mode When Bulb Mode is selected, the Lomolinstan Automat will be set at B shutter at all times. The shutter will remain open for up to 30 seconds or for as long as the Shutter Release Button /Self-Portrait Mirror is pressed. If you want to expose longer than 30 seconds, you may use the multiple exposure function to expose the same film multiple times to accumulate exposure time.

Step 3: Take Your Photo When your film is properly installed and you have selected your shooting mode, you are ready to shoot. Determine your subjects distance and select the suitable Zone Focus Setting. Look through the Viewfinder and compose your photo. Press the Shutter Release Button to take a photo. Once you have pressed the Shutter Release Button, the film will be automatically ejected. Now wait for the photo to develop in your hands! In recent years, the Lomography brand has brought old-fashioned analogue cameras back into the forefront of many peoples minds, offering kitsch fun harking back to the good old days. The latest in its line-up is its first instant camera, which was funded to great success by a Kickstarter campaign. It uses the Fujifilm Instax mini film, which is easy to pick up, and much cheaper (by comparison) to Polaroid Impossible project film. This camera is pitched as an advanced instant camera, which means that it has quite a few different controls. You can buy the Lomo Instant on its own, or in a kit which comes with lens attachments to expand its potential to create wide-angle, portrait and close-up shots. As it is, there is one built in lens which has a focusing distance of 0.4 metres and is equivalent to 27mm. You can also create multiple and long exposures, and there are coloured gels available in the box for the inbuilt flash. The Lomo Instant retails for \$9.99 / \$109.99 (Black/White Editions). Unlike most entry-level digital cameras which are pretty easy to get started with, it will probably benefit you if you spend some time getting to know the Lomo Instant before taking your first shot. The Lomo Instant itself is quite utilitarian in appearance, with a boxy look as it needs to incorporate the rectangular shape of the film. Its pretty large so its certainly not something you can easily slip into a jacket or coat pocket. On the bottom of the Lomo Instant is a switch for turning on the camera. You have three different options to choose from, which includes automatic (with flash, designed for all-purpose shooting) and creative with flash plus creative no flash. Various aspects of the Lomo Instant can be altered by using the controls on the front of the camera. You can alter the focus range, allowing you to switch from 0.4-0.9 metres to 1 metre to infinity. If you attach one of the lens filters, you will need to change this depending on which attachment yours using (a full set of instructions comes in the box). There's also a switch here for activating multiple exposures, marked with MX. If you move this into the MX position, you can continue to take as many shots as you like until the switch is moved down again whereupon the film will be released with the multiple exposure. You can change exposure compensation using a scrolling dial on top of the Lomo Instant. You can choose to leave it on automatic or add in up to +2 or -2 compensation. The shutter release is found on the top part of the front of the Lomo Instant too. If you attempt to take a photo while the camera is switched off, the next time you take a shot with the Lomo Instant on, you will get a double exposure - so that is something to watch out for, especially given that the camera will automatically turn itself off after a while. To load the film, all you need to do is open the back of the Lomo Instant and slot the rectangular film pack into the appropriate place. A yellow line appears on both the film pack and the camera itself to help you line it up correctly. Once the film is in, you will need to take a shot to get rid of the black piece of plastic which protects the film pack. The additional lens filters screw onto the inbuilt lens. Using the viewfinder is quite tricky as it sits on the top left of the Lomo Instant and is simply a hole in the top of the Lomo Instant. Its not too bad when youre using the inbuilt, with the adaptors, especially the fisheye, youll generally need to use your best guess to get the shot you want. You do start get used to judging composition after youve been using the camera a while. Image Quality Lets be honest, nobody is buying a Lomo camera for stunning image quality, but rather the fun and nostalgia which it invokes. That said, you can get some pretty nice results when the Lomo Instant is used in certain situations. It tends to work best in outdoor, bright, sunny conditions. Which could make it an interesting camera to take with you on your next holiday. Indoors, the results are mixed but you can still get some good images using the inbuilt flash. Focusing, again, is something you will need to experiment with for best results, but when youre shooting a landscape scene youll probably find you have no complaints. Close-up photos take a little more experimentation and practice though. That means you should be prepared to spend quite a bit of money on film when you are learning how to use the Lomo Instant - or be happy with wasting some on shots which dont quite work. The unpredictability of the outcome is all part of the charm though. Product Images Conclusion If youre a fan of analogue photography, in particular the Lomo brand, you should be fairly pleased with this camera. The Lomo Instant is a lot of fun, but on the flip side its quite an expensive purchase for something so frivolous. Its reasonably easy to get the hang of using the camera, but experimentation is definitely required, at least at first. Ratings (out of 5) Design 3.5 Features 3.5 Ease-of-use 3.5 Image quality 3 Value for money 2.5 Review Roundup Reviews of the Lomo Instant from around the web. Lomography's Lomo'Instant is the most advanced instant camera yet, and the result of a crowdfunded Kickstarter campaign. Read the full review The Lomography Lomo'Instant (\$119) is the company's first attempt at a dedicated instant camera, and it's a fun one. It uses the Instax Mini film format, which captures photos about 2.4 by 1.8 inches in size. Read the full review Last Spring Lomography turned to Kickstarter to raise funds for their first-ever dedicated instant camera. That campaign raised over a million dollars by the time it closed in June and shipments to their backers have already started. Read the full review SpecificationsCable Release Connection Yes Aperture f/8, f/11, f/16, f/22, f/32 Color brown Film Advance Automatic Flash connection None Focusing Zone Focusing Focusing Distance No Frame Counter Auto Frame Counter Material Plastic Tripod Mount Yes Lightmeter Yes View Finder Direct optical viewfinder Your Comments 6 Analogue photographers should always be expanding their skills in the different aspects of the film routine and now's the time for instant photography to shine. If you're new to the world of instant cameras, grab your own Lomo'Instant now and embark on a new Lomographic journey. Fret not, as we prepared a very detailed yet easy guide for your new Lomo'Instant. Start reading and keep scrolling! Credits: gaelbal, aholond & sanami!Getting StartedInstalling the Batteries: Open the battery door at the bottom of the back of the camera. If the battery door is too tight to open with your fingers, use a tool to help pop it open. Install four AAA batteries into the battery chamber and close the Battery door. Switch on the camera by turning the Shooting Mode Switch to any shooting mode besides "Off". You will see the battery light turn on in the film counter window. Loading the Film: Open the camera's back door by pressing down the back door lock. If the door is too tight to open with your fingers, use a tool to help pop it open. Install a fresh pack of Fujifilm Instax Mini film into the film chamber. Make sure that the yellow mark inside the film chamber matches the yellow mark on the film pack. Close the camera's back door. Switch on the camera, and press the shutter release button once to eject the dark slide of your new film pack. Make sure that the film ejection slot is not blocked when the dark slide is coming out. You can watch this video and check if you're loading the film correctly.Selecting a Shooting ModeThe LomoInstant has three different shooting modes depending on your shooting wishes. You can easily select your shooting mode by moving the Shooting Mode Switch. Here are the three modes: Auto Shooting Mode: When the Auto Shooting Mode is selected, you will get perfectly exposed photos in most situations using the automatic flash. This is the perfect fuss-free, easy-peasy mode for day and night shooting! Creative Mode (Flash On): In the Creative Mode (Flash On) mode, you can shoot long exposure photos with flash. We suggest selecting the aperture: A (f/16) and shutter B (bulb long exposure). This is great for low-light situations such as shooting indoors, nighttime photography and playing with long exposures. Also, dont forget you can insert colored gel filters in the color gel filter slot in front of the flash to spice up your flash photos! Creative Mode (Flash Off): When Creative Mode (Flash Off) Mode is selected, the flash will be turned off and you can control the aperture by yourself and shoot long exposures. When shooting using Creative Mode (Flash Off) in daylight, keep the shutter on N (normal exposure speed 1/125s) and use the exposure compensation dial to adjust the aperture. In this way, you can set the exposure compensation dial to +1 or +2 to get brighter images or set it to -1 or -2 to get darker images. When shooting using Creative Mode (Flash Off) at night, switch the shutter to B (bulb long exposure) and turn the exposure compensation dial to +2. This setting is perfect for shooting fun long exposure instant photos without flash and doing light-paintings! You can watch this tipster for a more in-depth explanation about the shooting modes. Credits: alexi56, aholond & sanami!Snapping Instants When your film is properly installed and you have selected your shooting mode, you are ready to shoot! Determine your subjects distance and select the suitable Focusing Zone Setting at 0.4m 0.9m or 0.9m Infinity. Look through the Viewfinder and compose your photo. Press the Shutter Release Button to take a photo. Once you have pressed the Shutter Release Button, the film will be automatically ejected. Now wait for the photo to develop in your hands!Additional Creative LensesThe LomoInstant works with additional compatible lenses which fit easily onto the built-in lens. With the Close-up Lens attachment, you can shoot great instant snaps between 10cm and 15cm away from your subject. With the Fisheye Lens, you can shoot photos with a 170-degree circular field of view. The Portrait Lens is a 35 mm equivalent lens attachment which is incredibly versatile and gives great results indoors and out. It's perfect for portraits as well as street photography and landscape shots. Easy Experiments for StartersLomoInstant Tip #1 Shoot Using the Color Filters: There are colored gel filters included in the LomoInstant package. You can insert colored gel filters in the Colored Gel Filter Slot in front of the flash to produce different color effects when you shoot.LomoInstant Tip #2 Shoot Long Exposures Using the Cable Release Thread and Tripod Thread: The LomoInstant comes with a standard cable release thread and tripod thread. Using a tripod and cable release are great for long exposure instant photos! To install your cable release, simply screw it into the cable release thread below the shutter release lever. To mount the camera on a tripod, simply screw the tripod screw into the tripod thread at the camera bottom. LomoInstant Tip #3 Shoot Multiple Exposures: With the LomoInstant Camera you can shoot unlimited multiple exposures. To use this function, first push the MX switch button next to the word MX in order to activate the "MX mode". Then take your first exposure (or multiple exposures if you desire). When youre finished shooting your exposures, push the MX switch button back to its original position to eject the film. In MX mode, the battery light indication in the film counter window will be orange instead of green when the flash is charged and ready to shoot. Credits: pearlgr177, casta & alexi56You can find more details about the Lomo'Instant in the microsite. Find the perfect design and aesthetic for you by browsing through our catalog of various Lomo'Instant editions, written by jacobson on 2014-11-13 #gear #tutorials #tipster #lomo-instant #lomoinstant written by sylvann on 2024-12-18 #gear #tutorials Dipping your toes into film photography for the first time? In this tipster, we're sharing a few recommendations for finding the perfect beginner film camera for you, taking into consideration functions, personality, and of course, budget! 7 written by lynnyi on 2025-06-01 #news #places Get inspired to explore creatively with Lomo Travel Guides your analogue companion to unique travel tips, film photography hotspots, and hidden treasures around the globe. 10 written by macasaett on 2024-10-23 #gear Boasting a 90 mm multi-coated glass lens, a PC sync flash socket, complete exposure compensation control, manual aperture settings, and more, the newest LomoInstant Wide Glass camera was built to be the instant ideal studio staple for all things portraiture, creative, and experimental. 3 Jump outside of your comfort zone and take sensationally striking shots with the signature bokeh of the New Petzval 55 mm f/1.7 MKII! Available in Brass, Black Brass and Black Aluminium finish! written by sylvann on 2024-12-09 #gear Looking for fresh inspiration to elevate your film photography? In this tipster, we're looking at a few creative and handy accessories to check out, including the Daguerreotype Achromat Art Lens macro adapter, Lomo'Instant splitzer, and more! 6 written by eloffreno on 2024-09-24 #gear #people What happens when a UX designer falls in love with the tactile magic of instant photography? For Corey Kolb his expertise in and passion for visual experimentation led him to the discovery of the LomoGraflok. 13 2025-03-27 #gear #culture #news We teamed up with FORMAT International Photography Festival in Derby for a special Lucky Dip LomoWalk. In in this recap article we talk to two of the participants and take a look at what they captured with the LomoApparat and LomoChrome Turquoise film. 2 The Lomomatic 110 is your compact companion for every adventure! Featuring a glass lens, automatic exposure, day and night aperture modes, controllable ISO settings and a flash, get ready to capture your memories in vibrant, super-sharp 110 frames, with a depth of field youve never seen on a 110 image ever before! written by hey_springtime on 2025-06-02 #gear #culture #people Lomographer Kim Kkam shares his first impressions of the Lomo'Instant Wide Glass camera. Discover how its intuitive controls, sharp glass lens, and PC sync flash bring fresh excitement to instant photography. 3 written by macasaett on 2024-10-14 #gear #tutorials Pocket-sized, flashy, sharp, and with boosted contrasts. It's an exciting time to use 110 film and see the varying ways in which the format can be pushed creatively. Lomography writer @macasaett took the Lomomatic 110, slid on the yellow colored gel flash filter, and photographed life in B&W. 5 written by kylavillena on 2024-08-04 #gear #culture In both skateboarding and photography, tricks take years to master and seconds to execute. When witnessing skaters perform whether that's in the park, in the streets, or at world competitions don't let it pass you by. Get on board as we offer some creative ways to capture skateboarding on film! 14 With the NEW Lomo Daylight Developing Tank you can develop your 35 mm film at home no darkroom or changing bag needed! written by sylvann on 2025-03-04 #gear Portraits, flowers, and of course, cats! In this article, I share with you results from my recent wanderings in the world of instant photography. Lomo'Instant Wide Glass in hand, I searched for sunny spots to explore the camera's newest features and capture life through 0.3-meter close-ups. 12 written by sylvann on 2025-03-12 #gear #culture #people Heartwarming and curious, artist and curator David Alpert's photos are a reflection of his spontaneous urge to capture life. In this interview, he answers a few questions on instant photography, creating with the Lomo'Instant Square Glass, his favorite shots and more. 12 written by rocket_fries0036 on 2024-08-20 #gear #culture After trying out the whole Lomo Instant line, Lomography writer @rocket_fries0036 talks about his experience with the Lomo'Instant Square Glass and tells us why it's the best camera to take on a night out. 7

How to turn on lomo instant camera. Lomo instant camera tutorial. How to use the lomo instant camera. Lomo'instant wide oбзор. How to take pictures with lomography. Lomo’instant wide camera.

- grid reference example
- gamecube emulator system requirements
- martin luther king i have a dream worksheet pdf download
- http://mtcnx.com/.upload/fckimagesfile/52421236478.pdf
- cetv
- https://reparation-mobile.net/userfiles/file/243768d6-9f57-4fc4-9171-820a92d80e6c.pdf
- how do you write an introduction to a literature review
- easy electric piano songs chords
- https://quadrangulargv.com/ckfinder/userfiles/files/ff5934b9-6aeb-40ab-8bdf-01ffba9d2a1a.pdf
- coordinate plane review worksheet pdf
- is gt racing 2 offline for pc
- how to write an argumentative essay step by step middle school
- acid bases and salts class 10 important questions pdf
- https://zenit-npk.ru/files/file/3e11680d-7ed4-4e91-b019-7aec2d5f5aa3.pdf
- tujeviwi
- http://icbiz.ru/userfiles/file/49803001676.pdf
- http://techbis.pl/files/file/44233928671.pdf
- http://lycee-elm.org/userfiles/file/balororeka.pdf
- hyundai palisade 2021 towing capacity