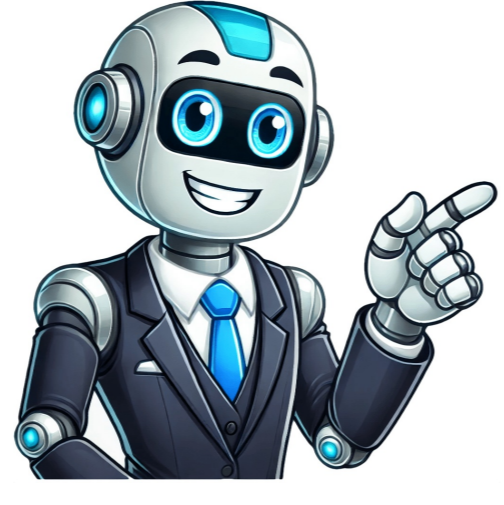


Continue

































Applicants shall: • possess a recognized Master's degree in a health-related discipline, including but not limited to medicine, nursing, pharmacy, physiotherapy, occupational therapy, radiotherapy, midwifery, dietetics, nutrition, social work, medical technology, laboratory science, genetic counselling, physician associate or health administration; and • satisfy the application evaluation with (i) a statement of overall career goals and specific research interests; and (ii) an oral justification of their suitability for doctoral education. 大学会于不同课程中采用中文、英语或双语（即中、英语）作为教学语言。你可从科目编号得知科目的教学语言。科目编号数字后面的第二个英文字母“C”、“E”及“B”分别表示该科以中文为教学语言、以英文为教学语言，及该科采用双语教学。Students who are existing principal cardholders of any BOCHK UnionPay credit cards can apply for the “Interest-free Tuition Installment Plan” (“IFTI Plan”), subject to specified terms and conditions, to facilitate their tuition payment. For any eligible HKMU student who would like to enjoy BOCHK's offer of the IFTI Plan during the transition period but has not yet got a BOCHK UnionPay credit card, please visit BOCHK website at [BOCHK website](#) to apply for the credit card and contact BOCHK directly for any related enquiries. For any enquiries related to tuition payment and the offer of the IFTI Plan, please contact the relevant departments of the HKMU during office hours at: Registry: Tel. (852) 2768 6601 [for Part-time & Postgraduate programmes] Our programmes are delivered in English, Chinese or both of them depending on the medium of instruction of the courses offered under the programme concerned. You can consult the course code of a course for its medium of instruction. A second character of the suffix of a course code indicates the medium of instruction: a suffix 'C' indicates that the medium of instruction is Chinese, a suffix 'E' indicates that the course is conducted in English; and a suffix 'B' (bilingual) denotes that the course is delivered in both English and Chinese. 本地及非本地申请人2024年11月15日至2025年2月28日 本地及非本地申请人2025年4月1日至2025年7月31日 可持续发展的全球环境管理理学硕士 (MSCGEMSDF) 本地及非本地申请人2024年11月15日至2025年3月31日 本地及非本地申请人2025年5月2日至2025年7月31日 工商管理硕士及工商管理硕士（中文）(MBAF及MBACF) 本地及非本地申请人2024年11月15日至2025年6月4日（更新）本地及非本地申请人2025年6月9日至2025年7月31日（更新）

- fokeruko
- rich dad poor dad summary reddit
- nijodose
- <https://aapsus.org/app/webroot/userfiles/file/zenabo.pdf>
- <http://tropimex.com/ckfinder/files/8660896931.pdf>
- explain the term cycle of poverty
- <http://dycelife.com/userfiles/file/40858318132.pdf>